

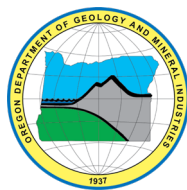
State of Oregon
Oregon Department of Geology and Mineral Industries
Ruarri Day-Stirrat, State Geologist

OPEN-FILE REPORT O-25-01

EARTHQUAKE AND TSUNAMI IMPACT ANALYSIS FOR THE OREGON COAST

Curry County Community Profiles

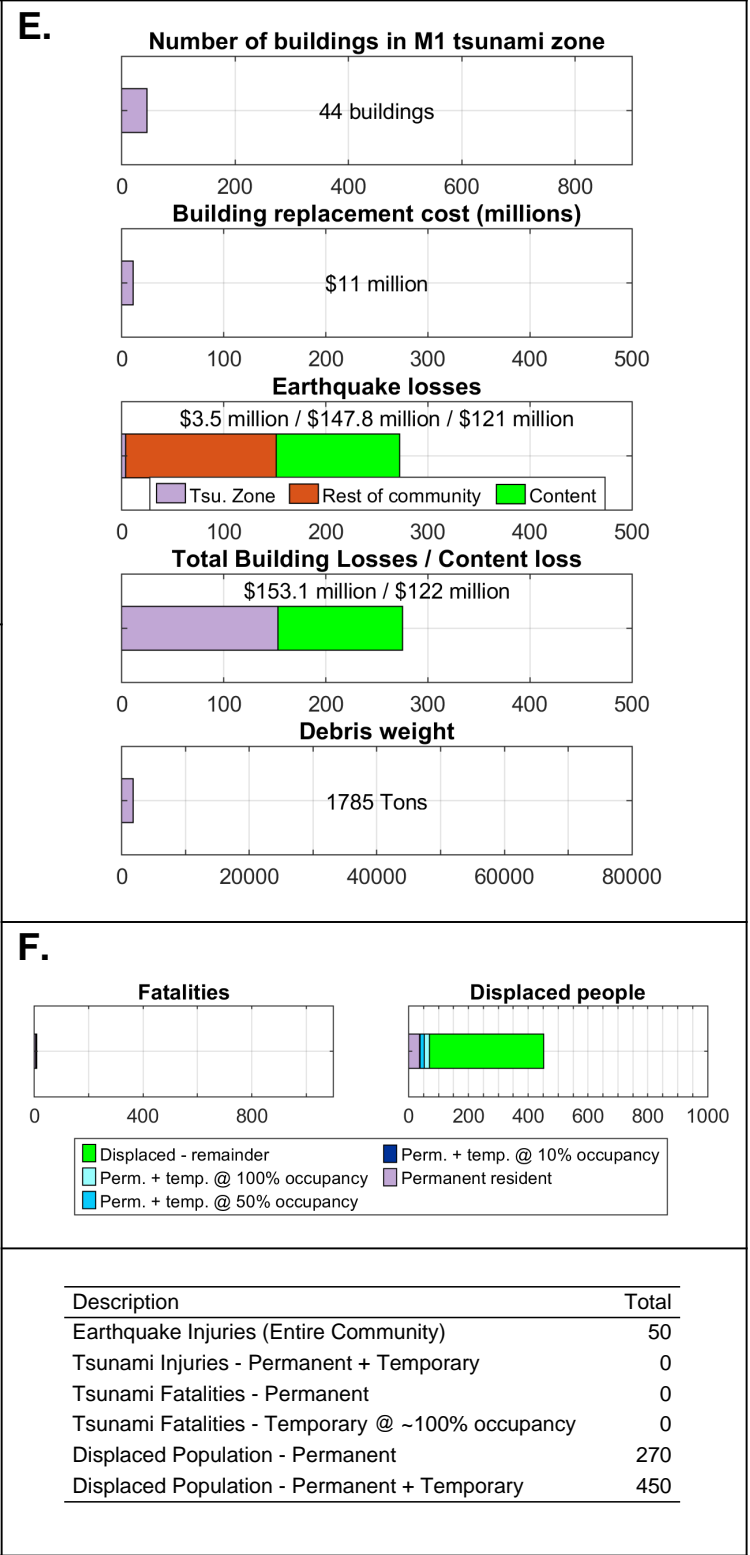
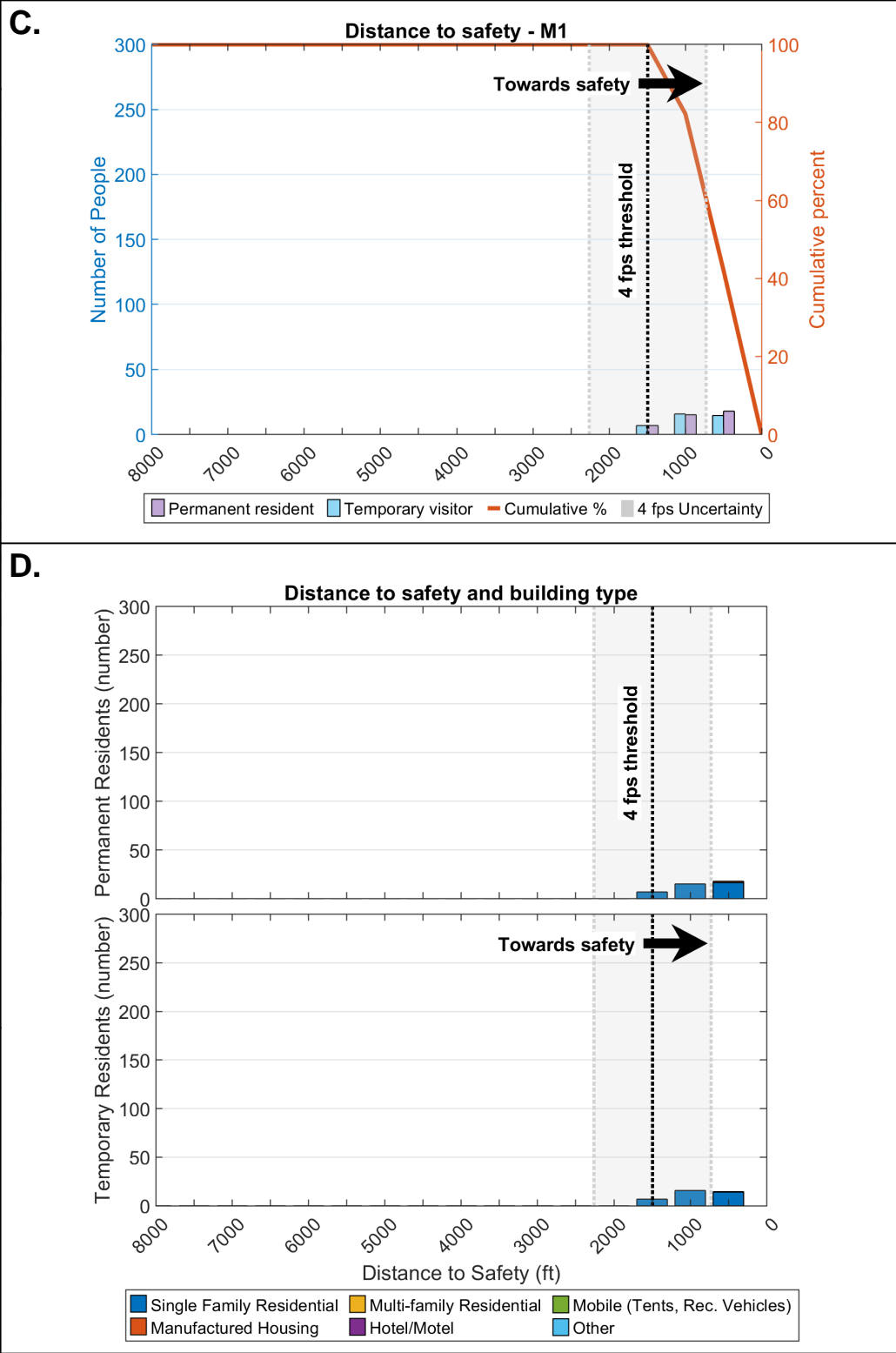
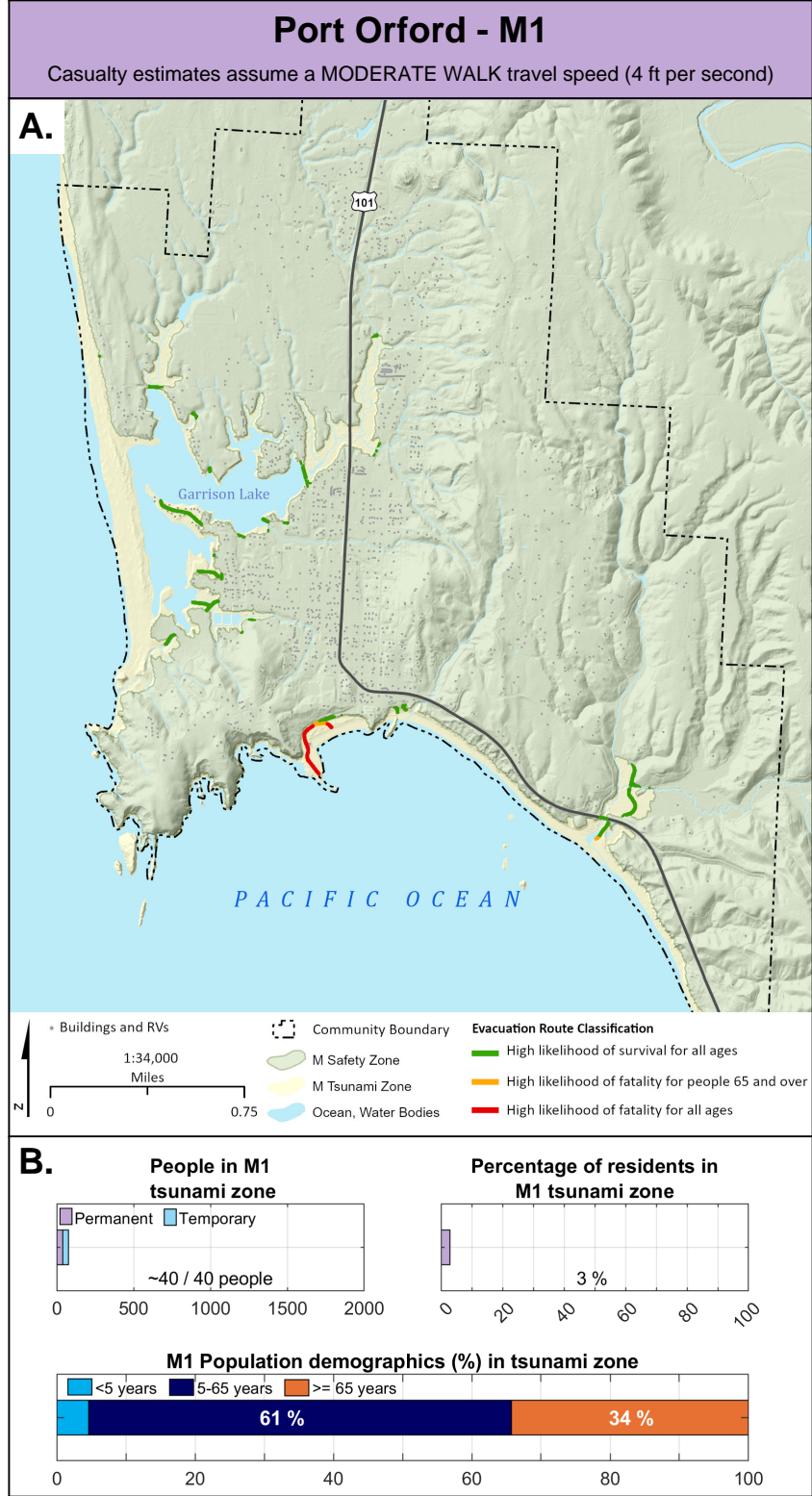
By Jonathan C. Allan¹ and Fletcher E. O'Brien²

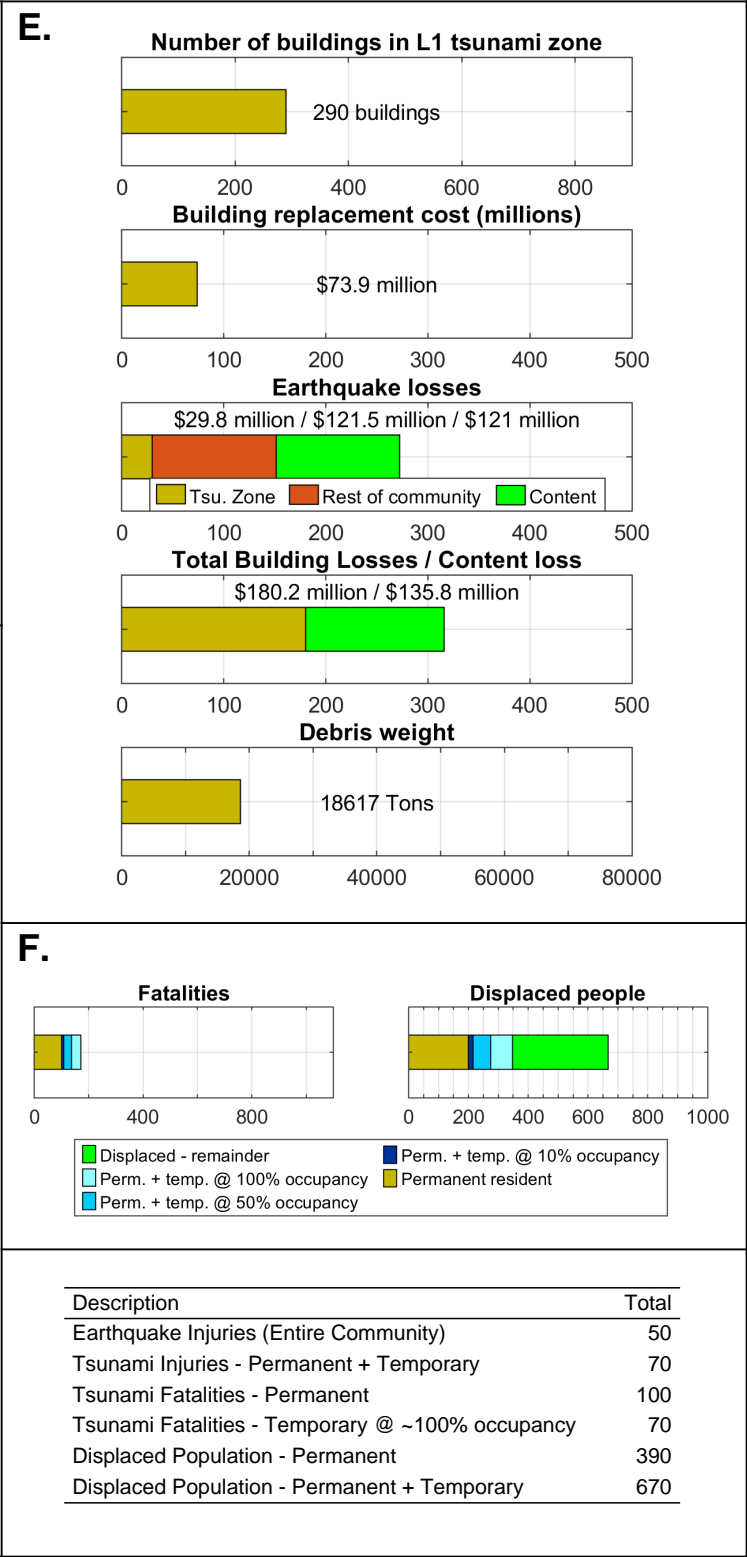
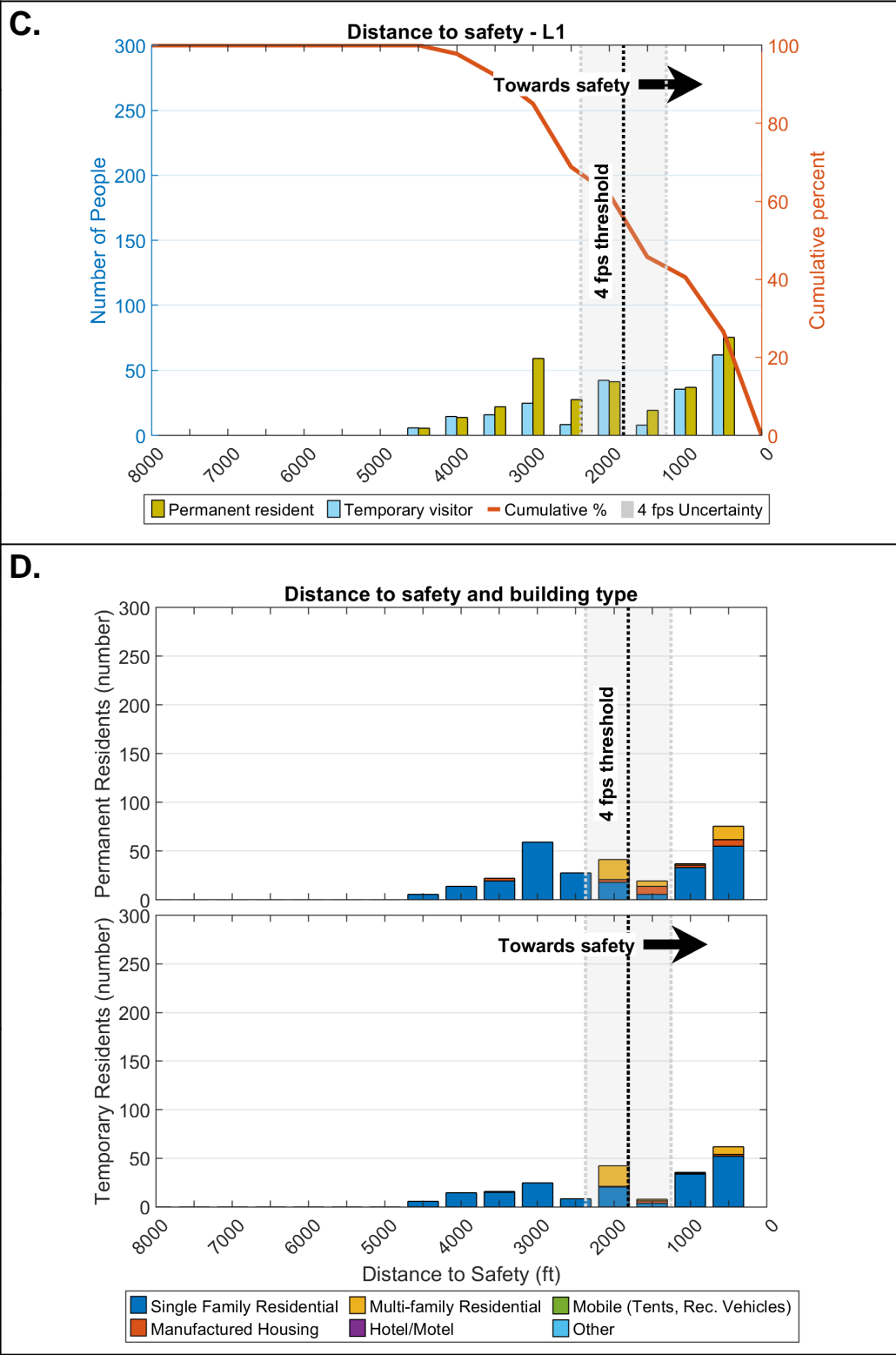
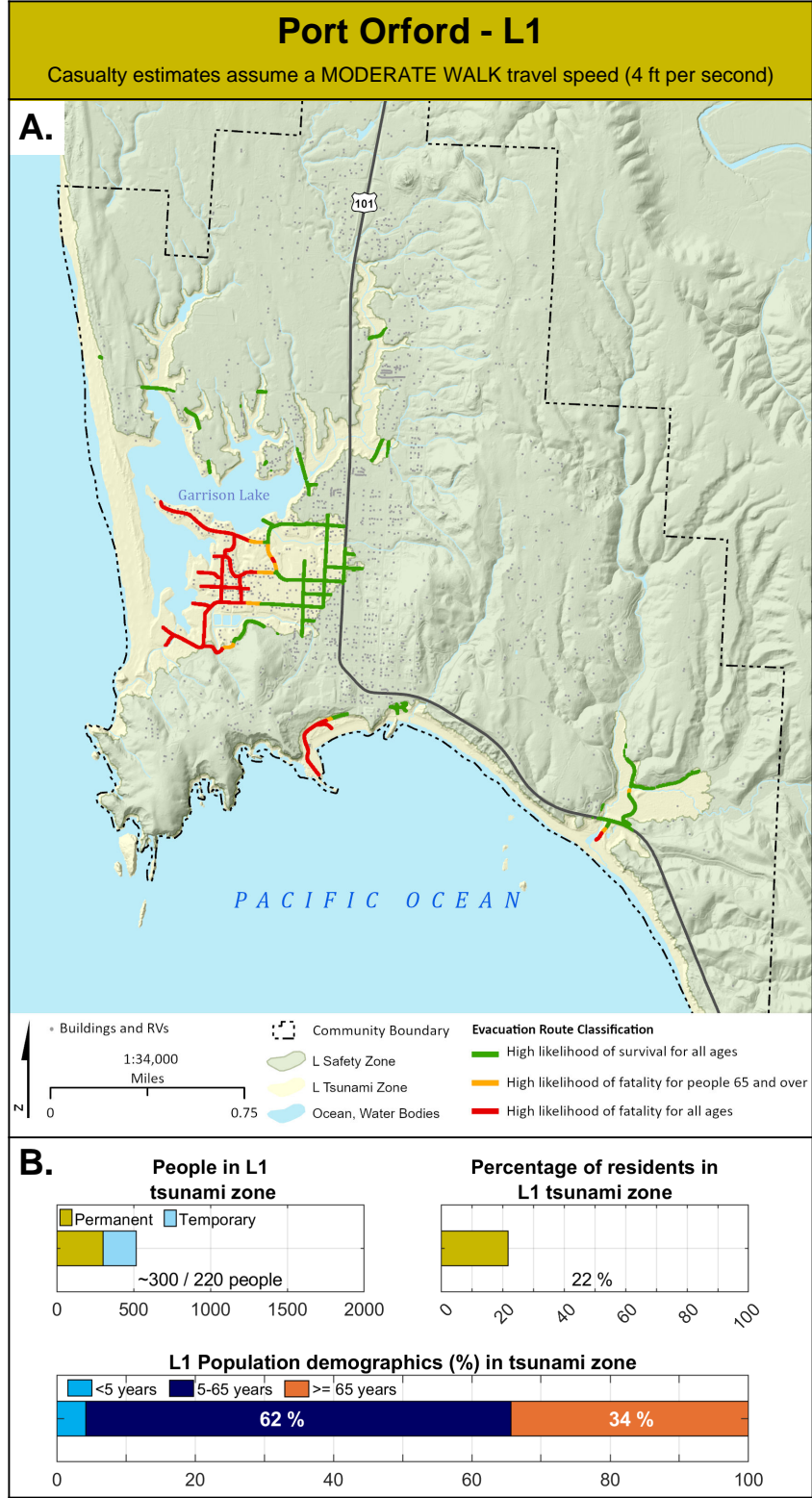


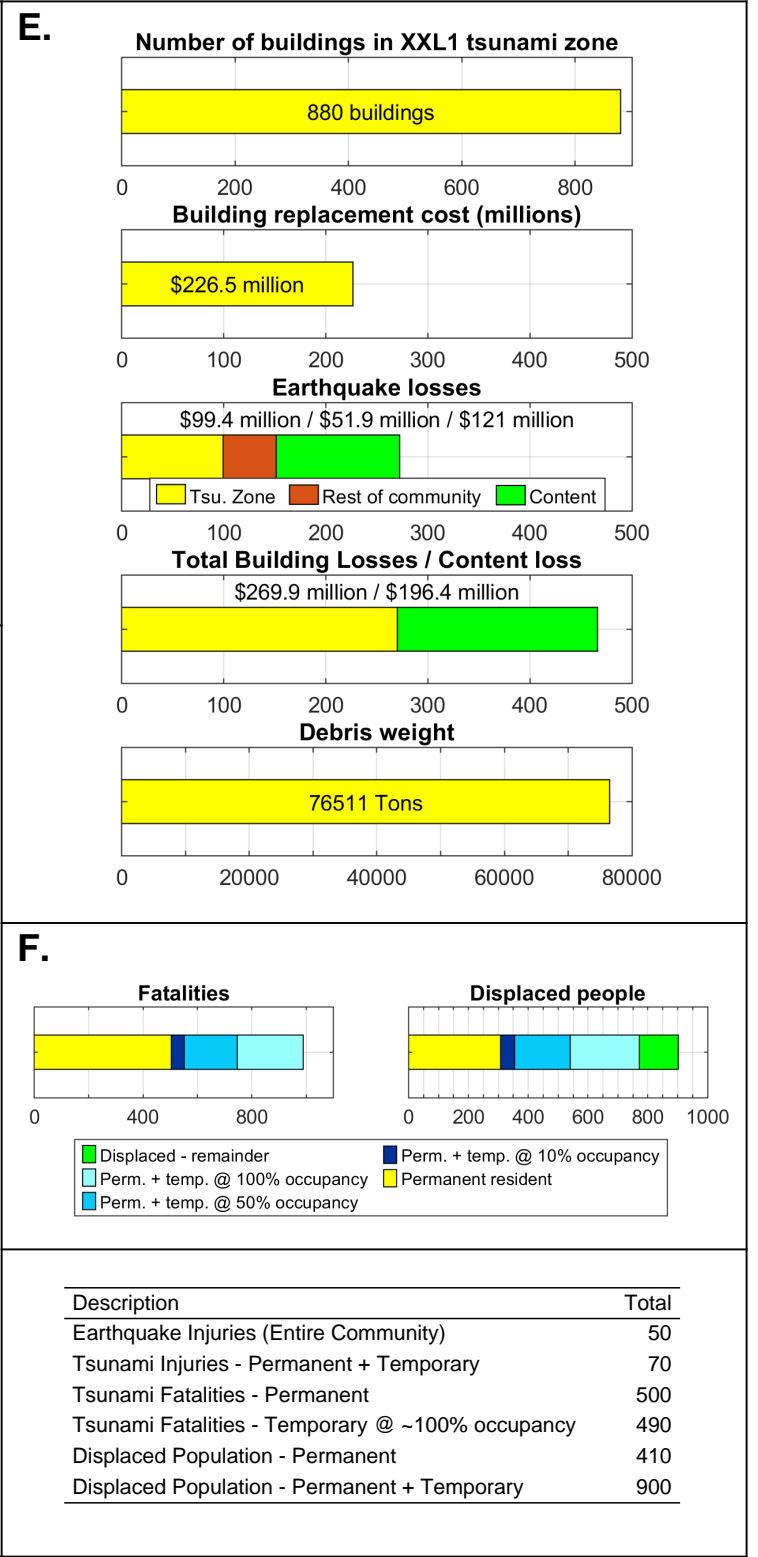
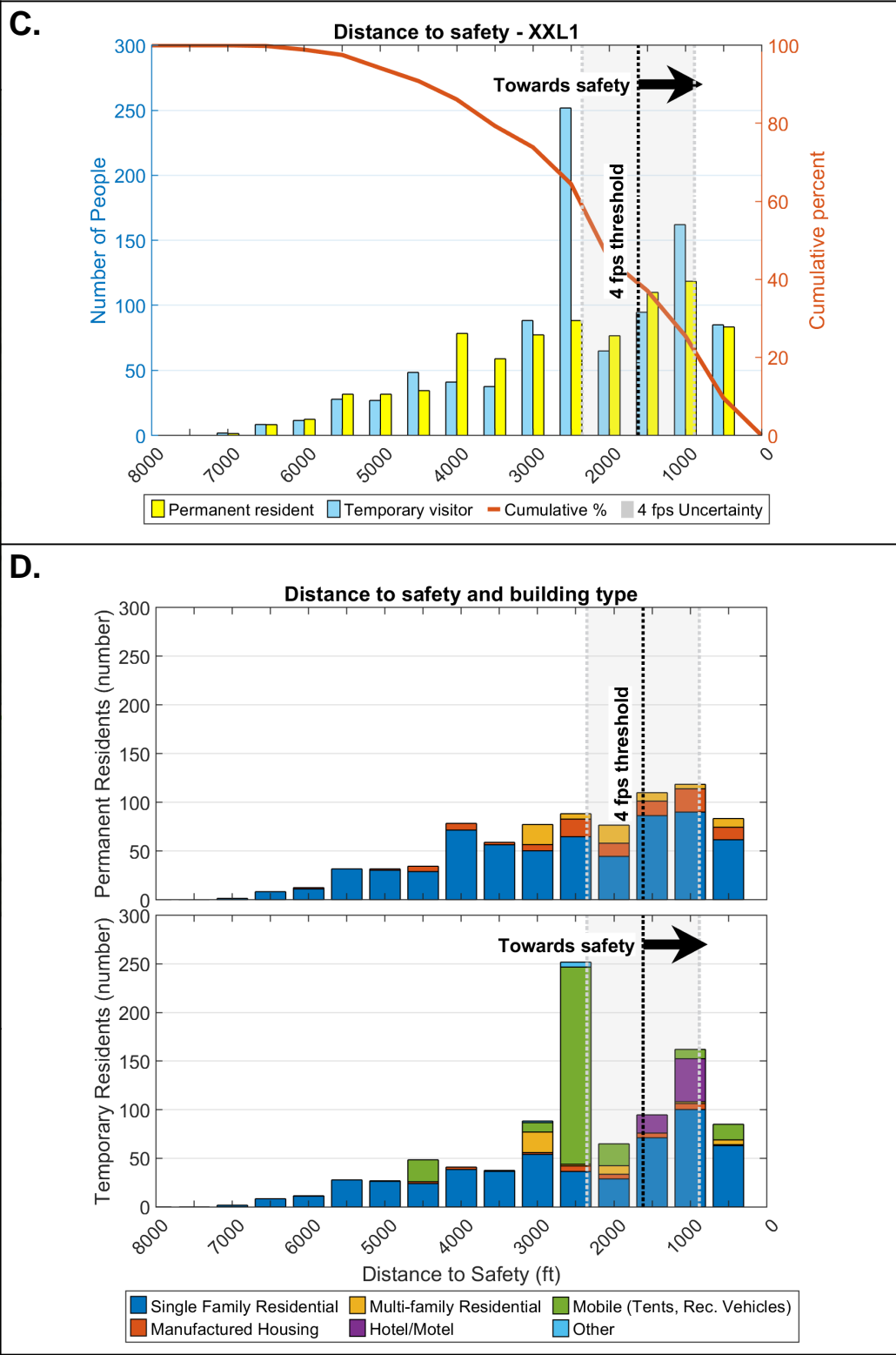
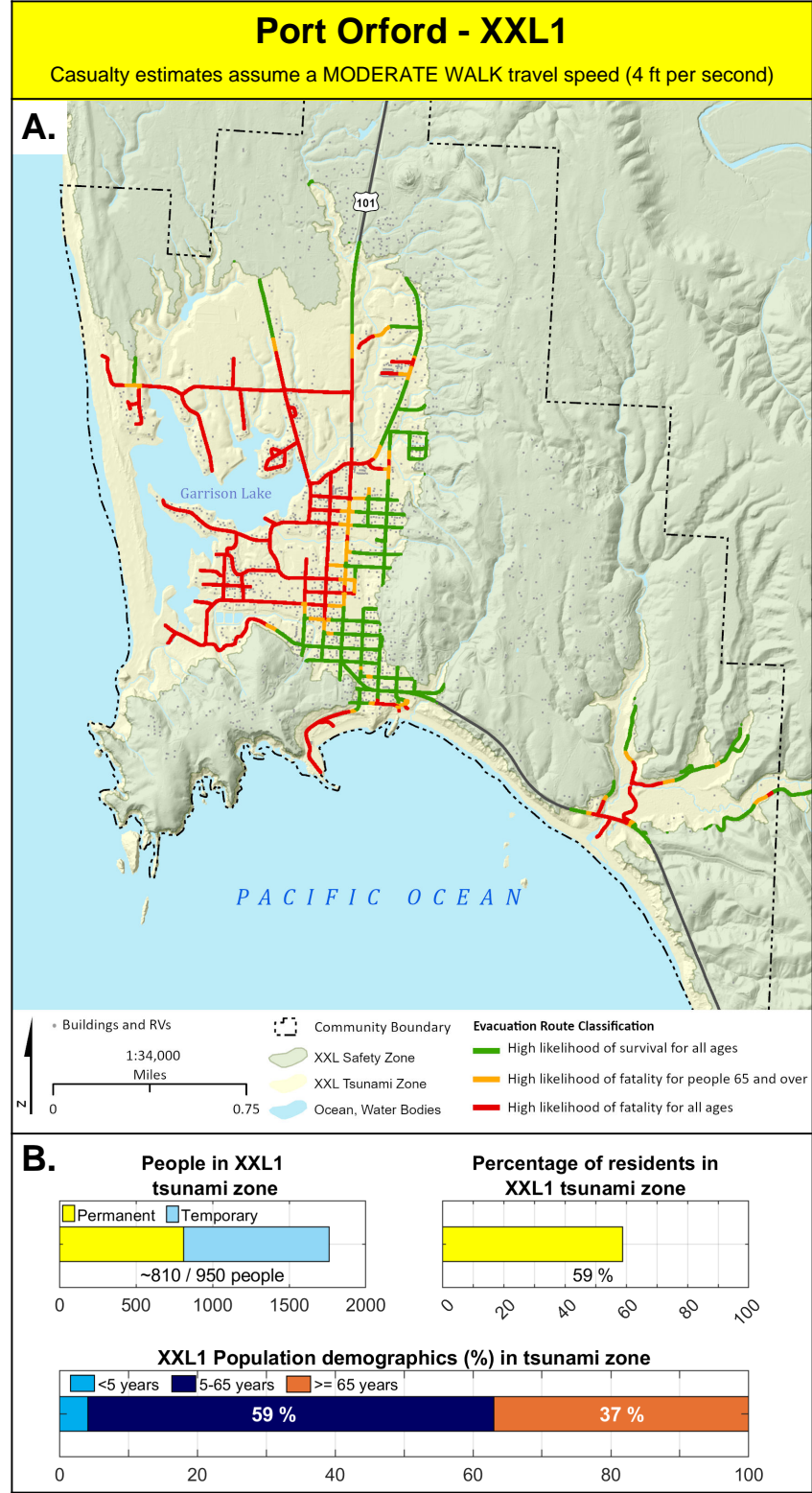
2025

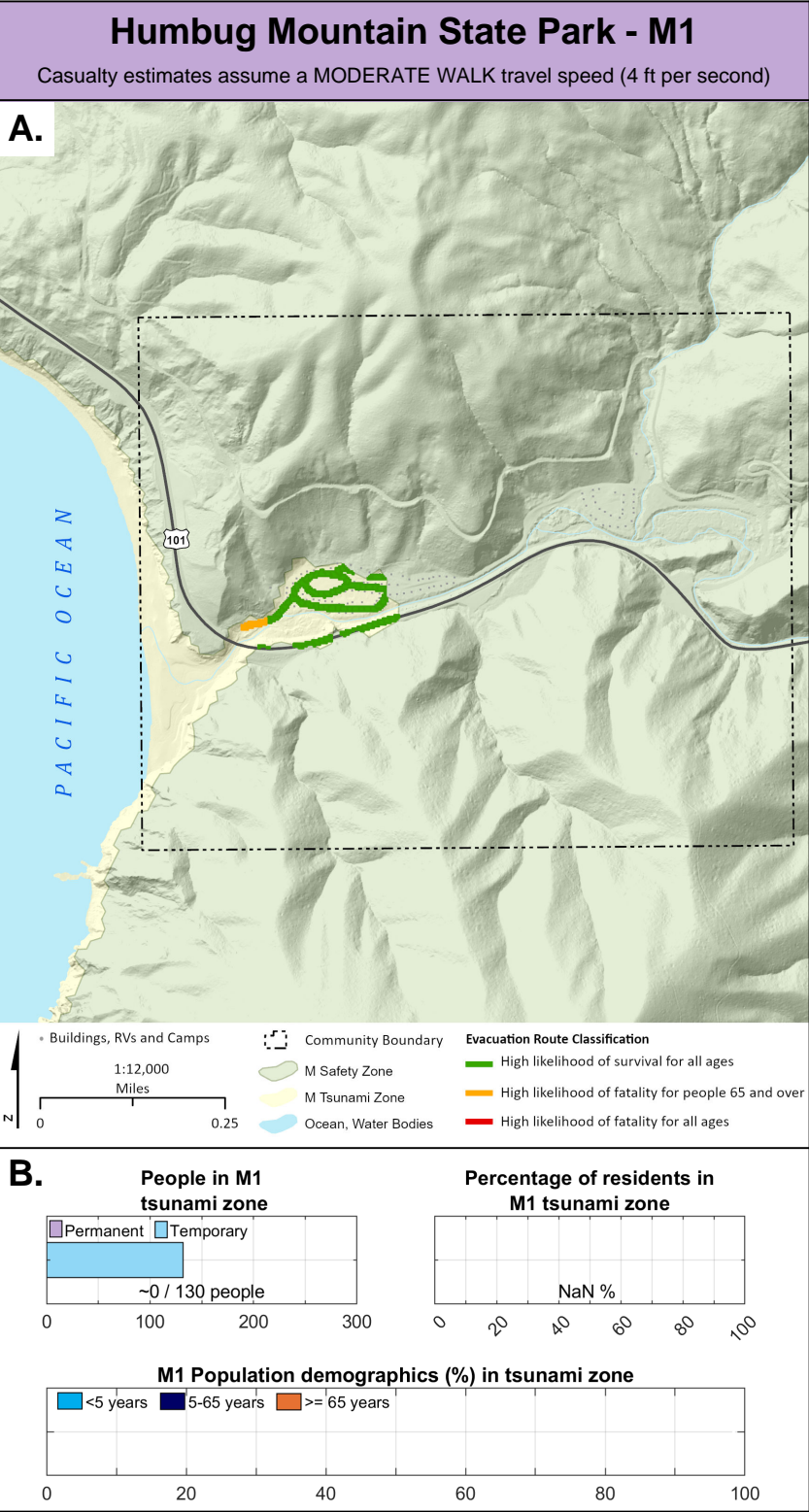
¹Oregon Department of Geology and Mineral Industries, Coastal Field Office, P.O. Box 1033, Newport, OR 97365

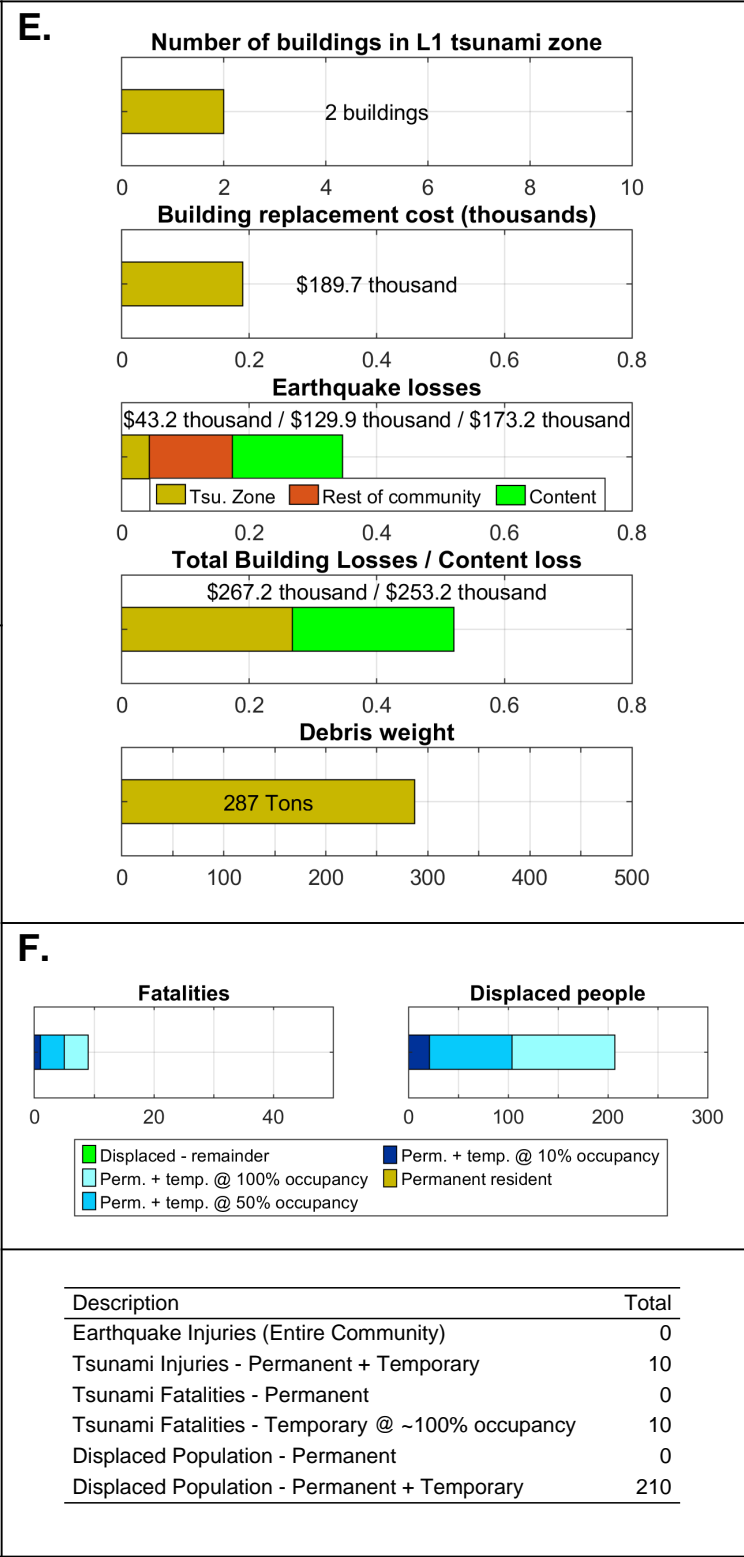
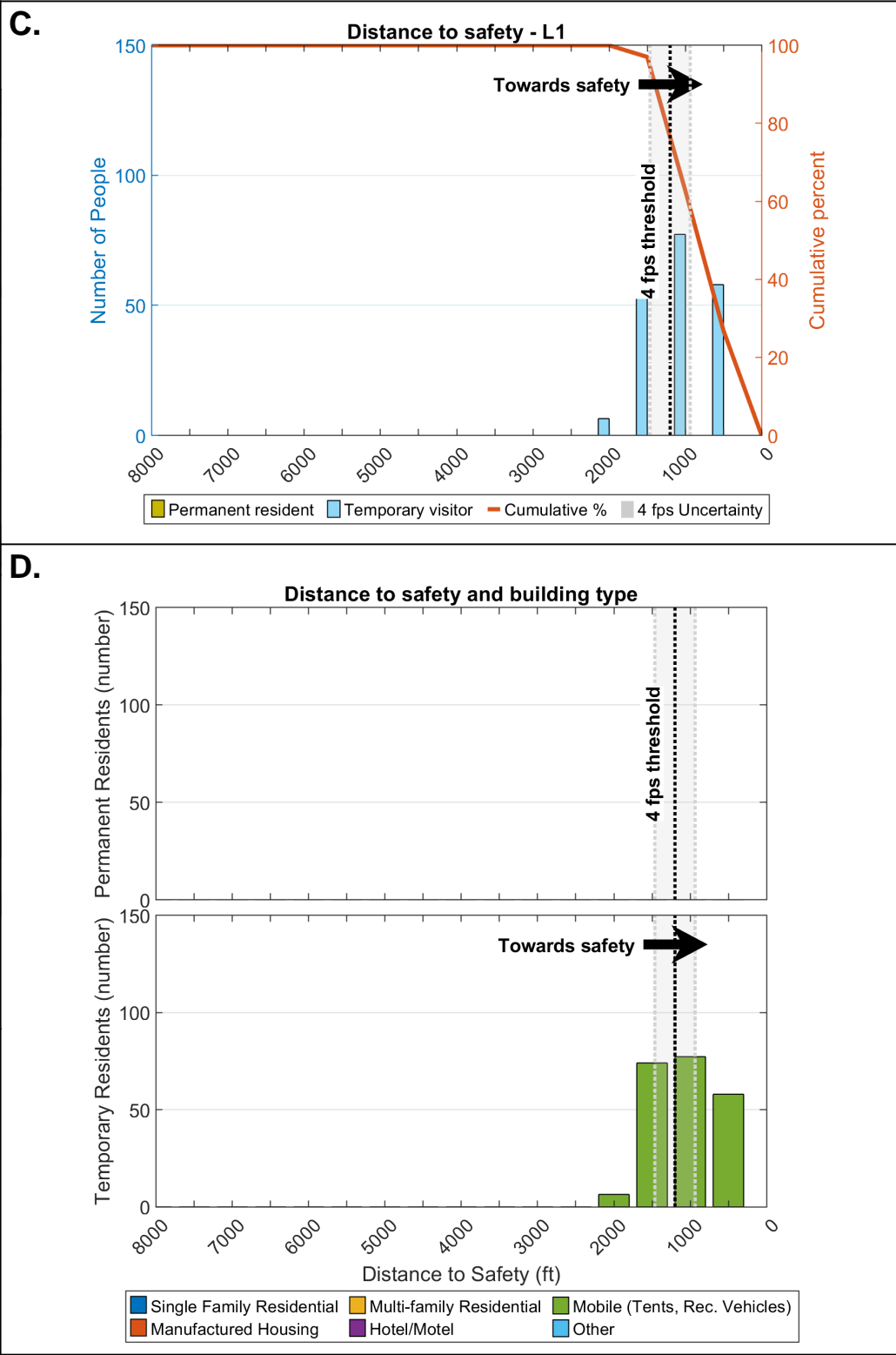
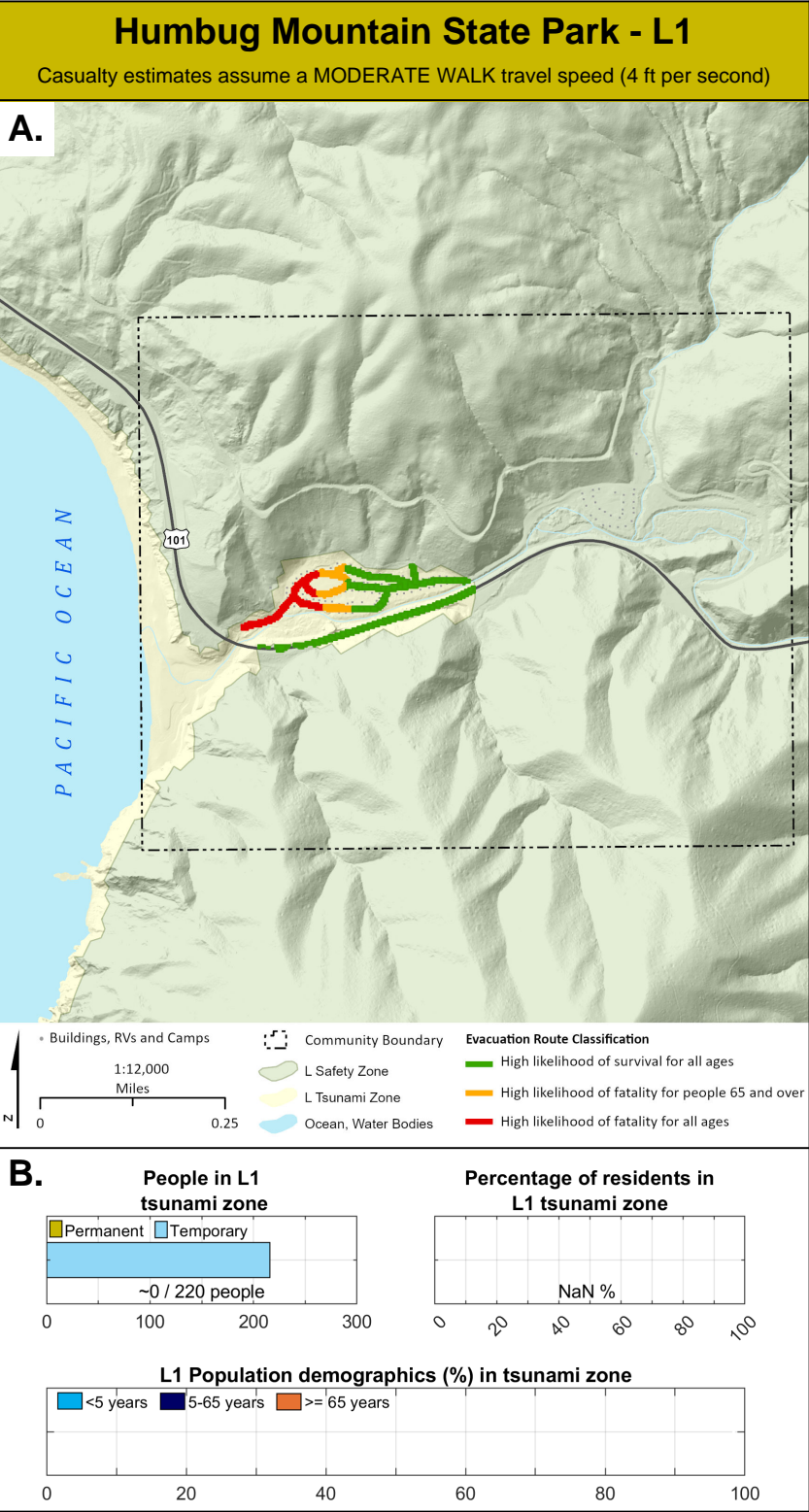
²Oregon Department of Geology and Mineral Industries, 800 NE Oregon Street, Suite 965, Portland, OR 97232

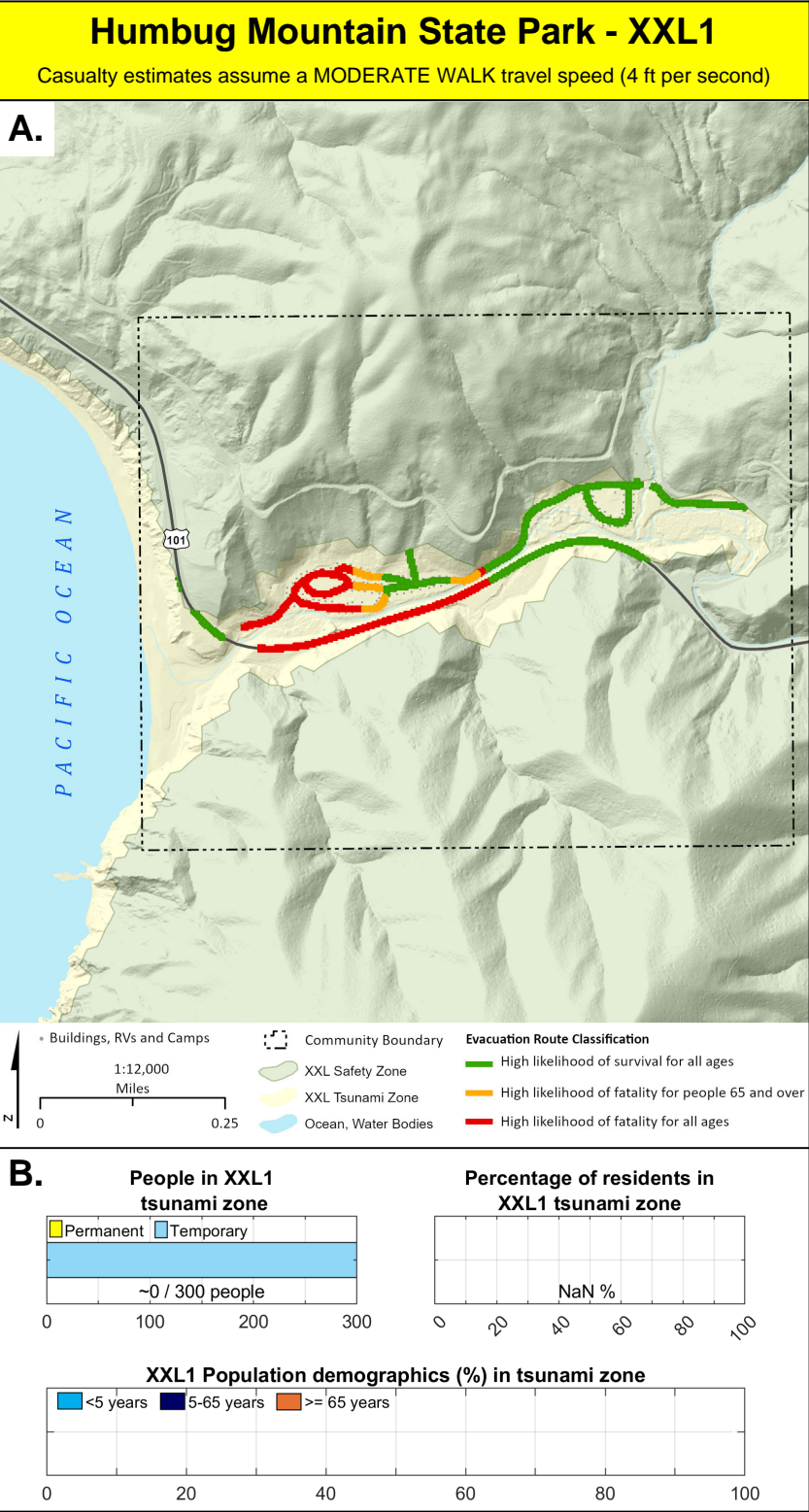


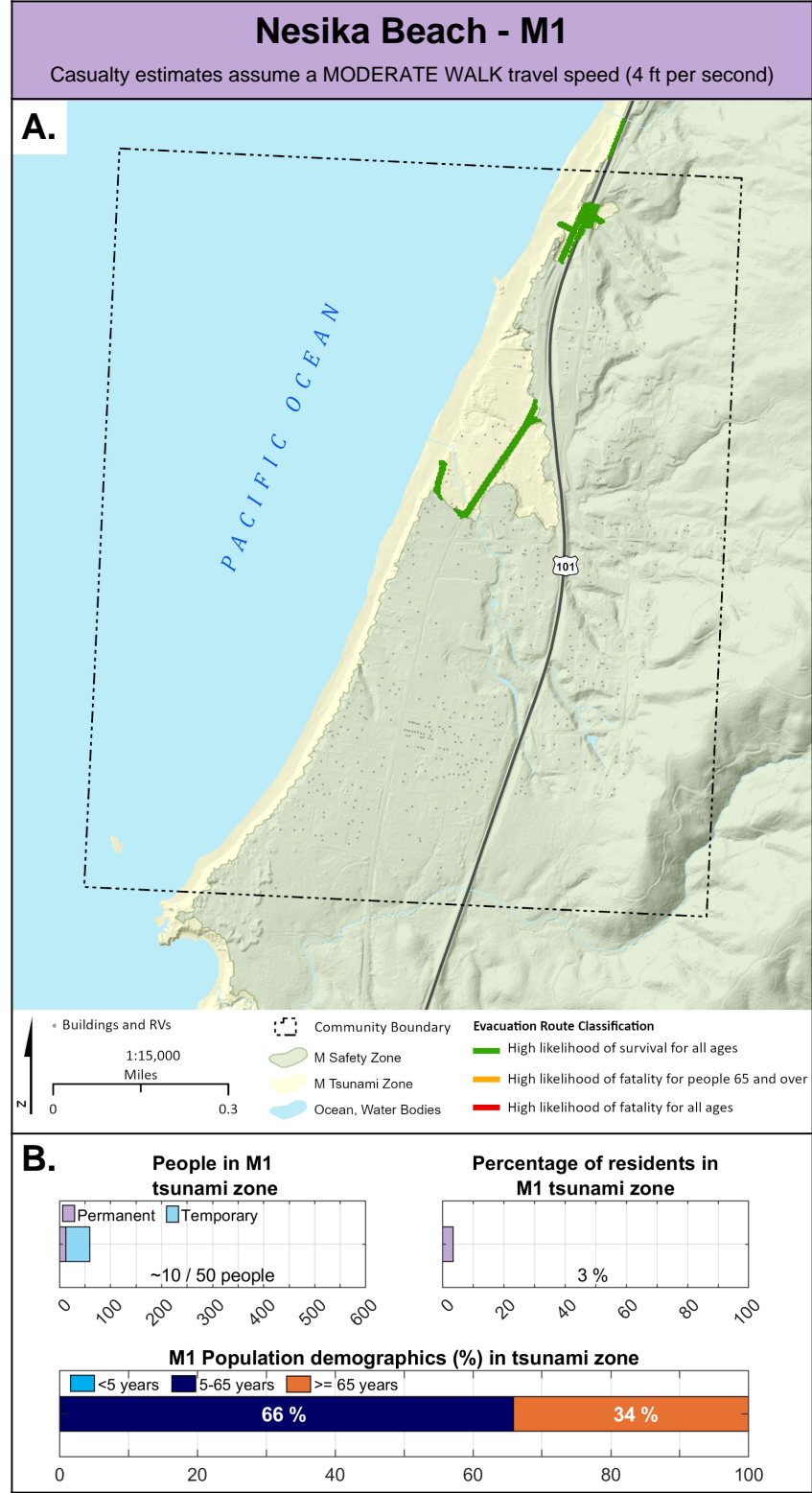


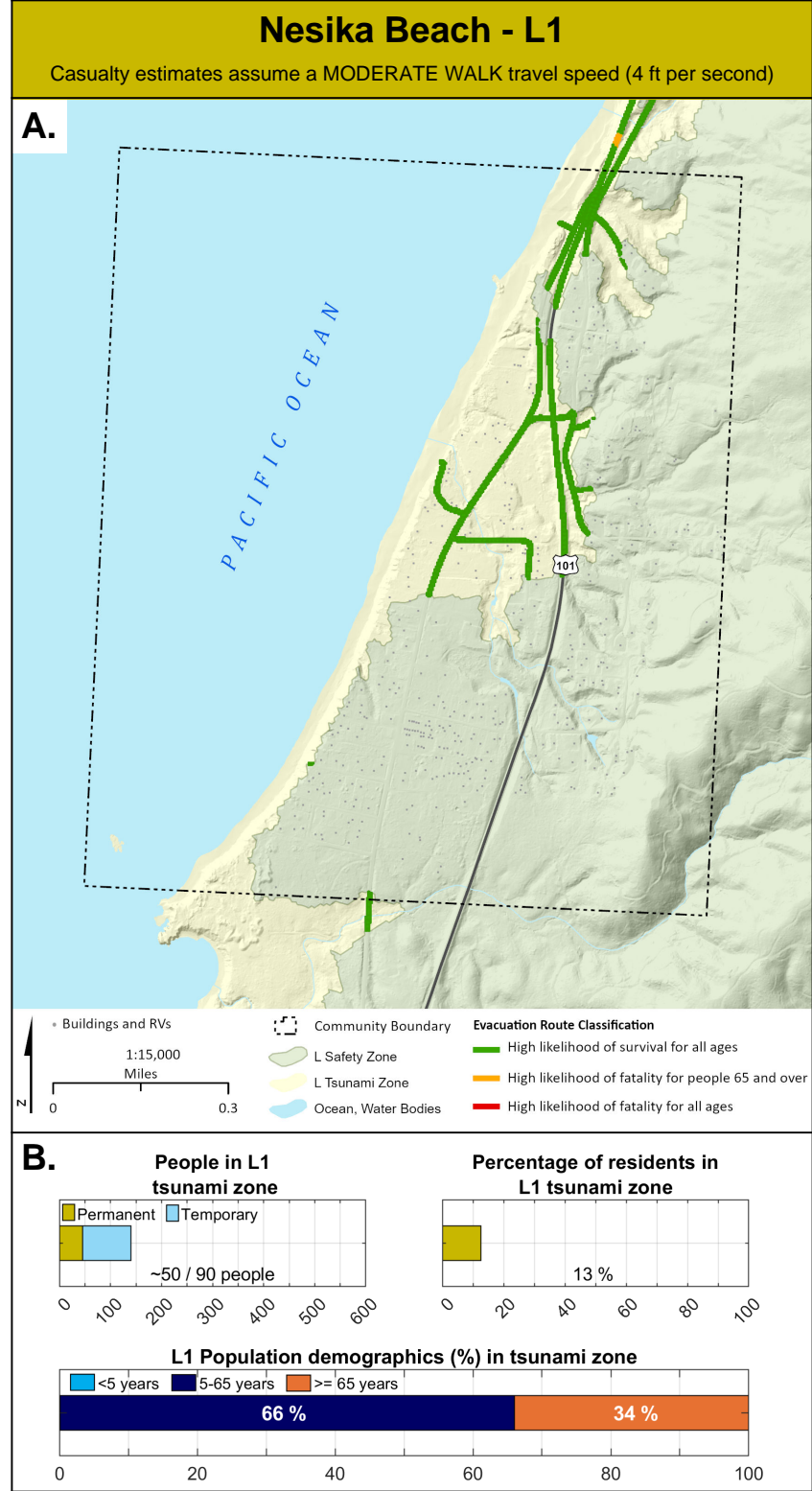


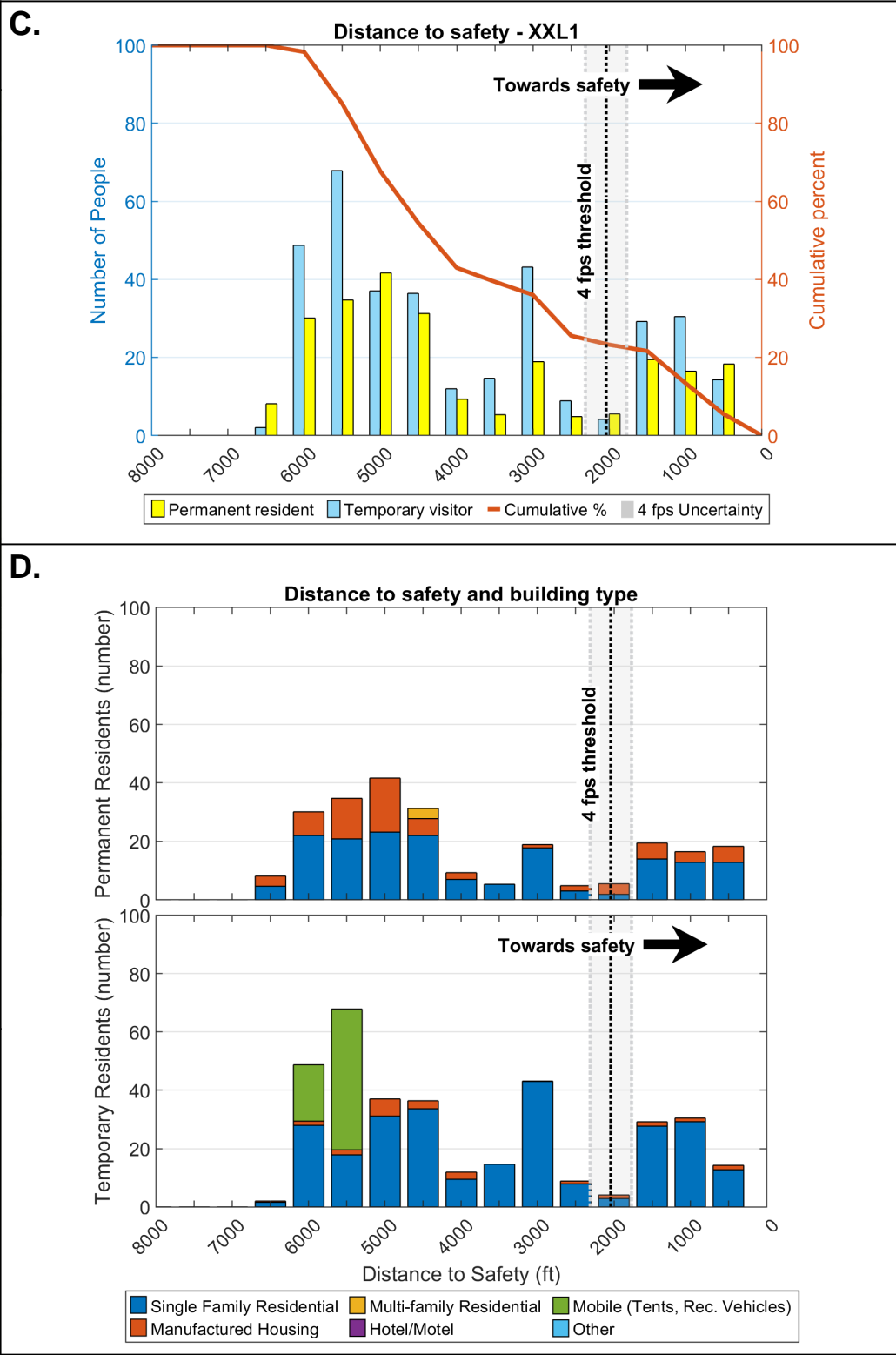
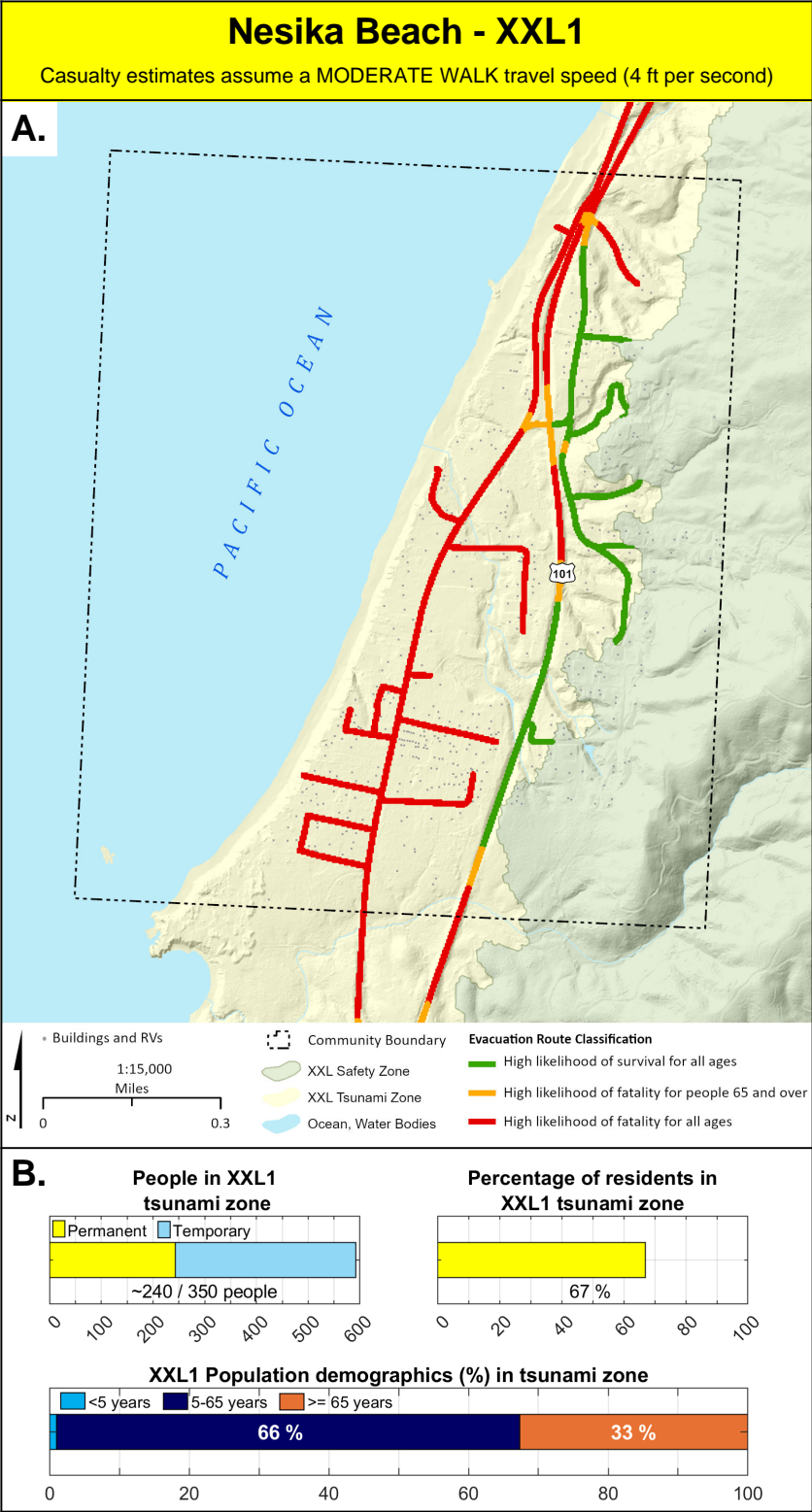








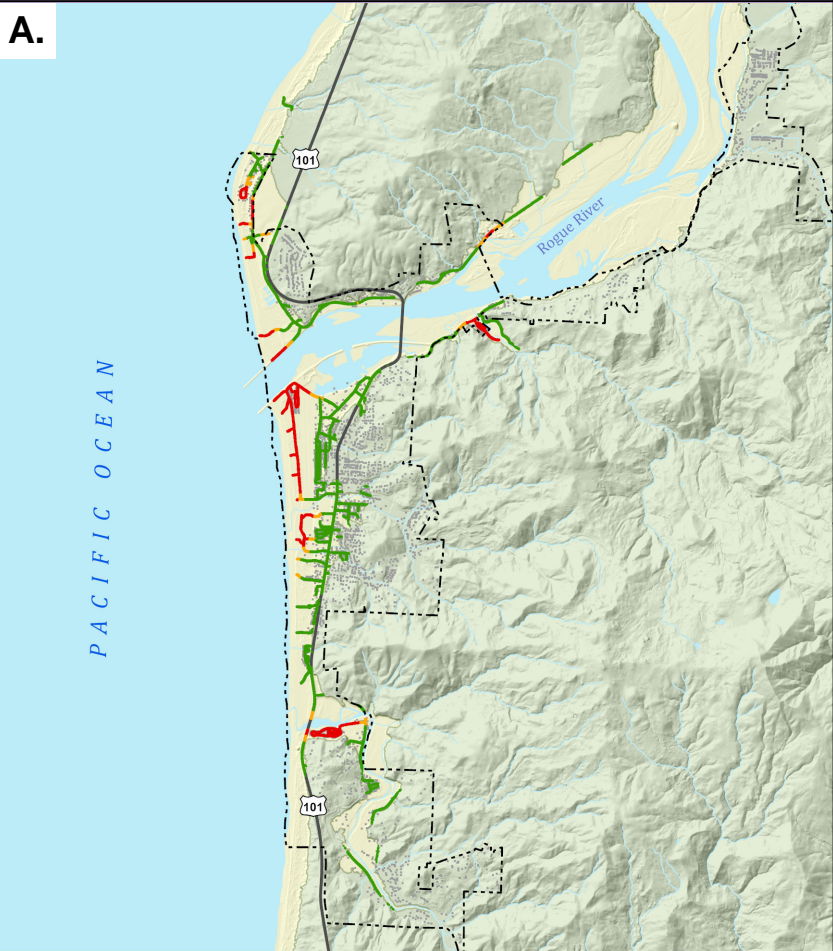




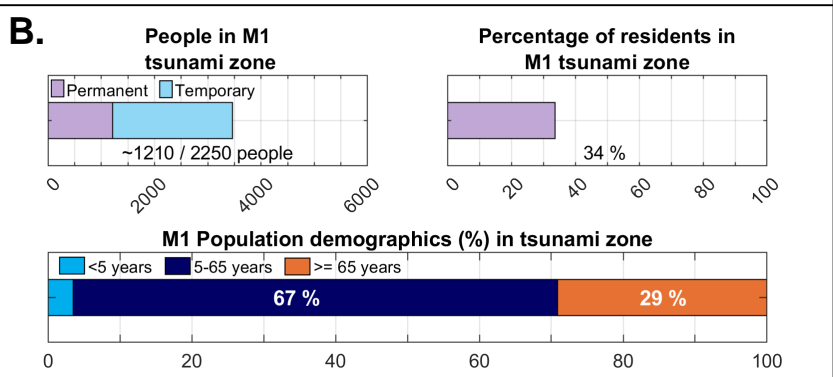
Gold Beach - M1

Casualty estimates assume a MODERATE WALK travel speed (4 ft per second)

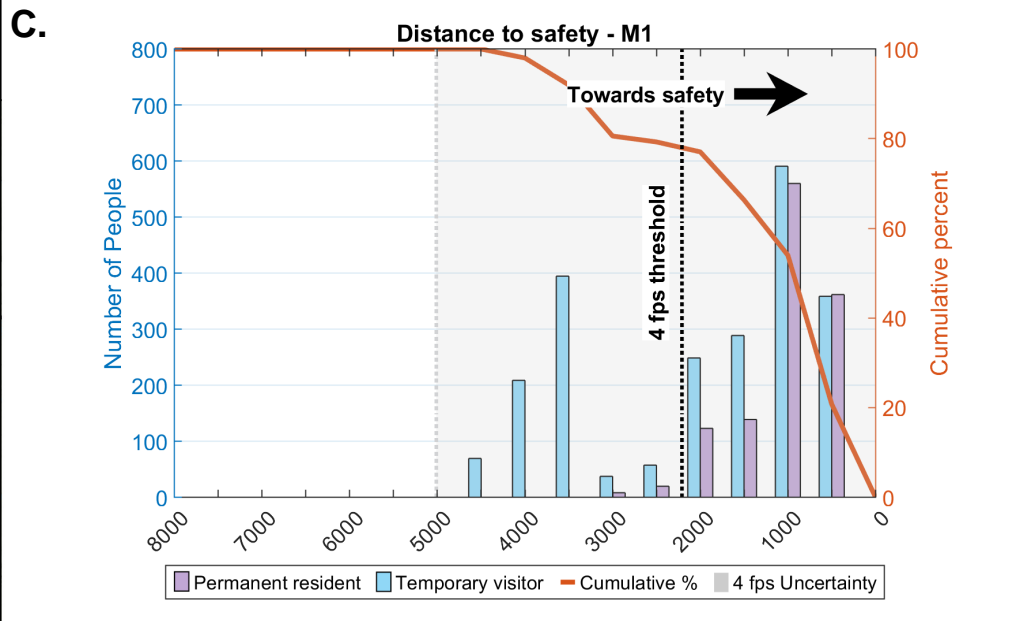
A.



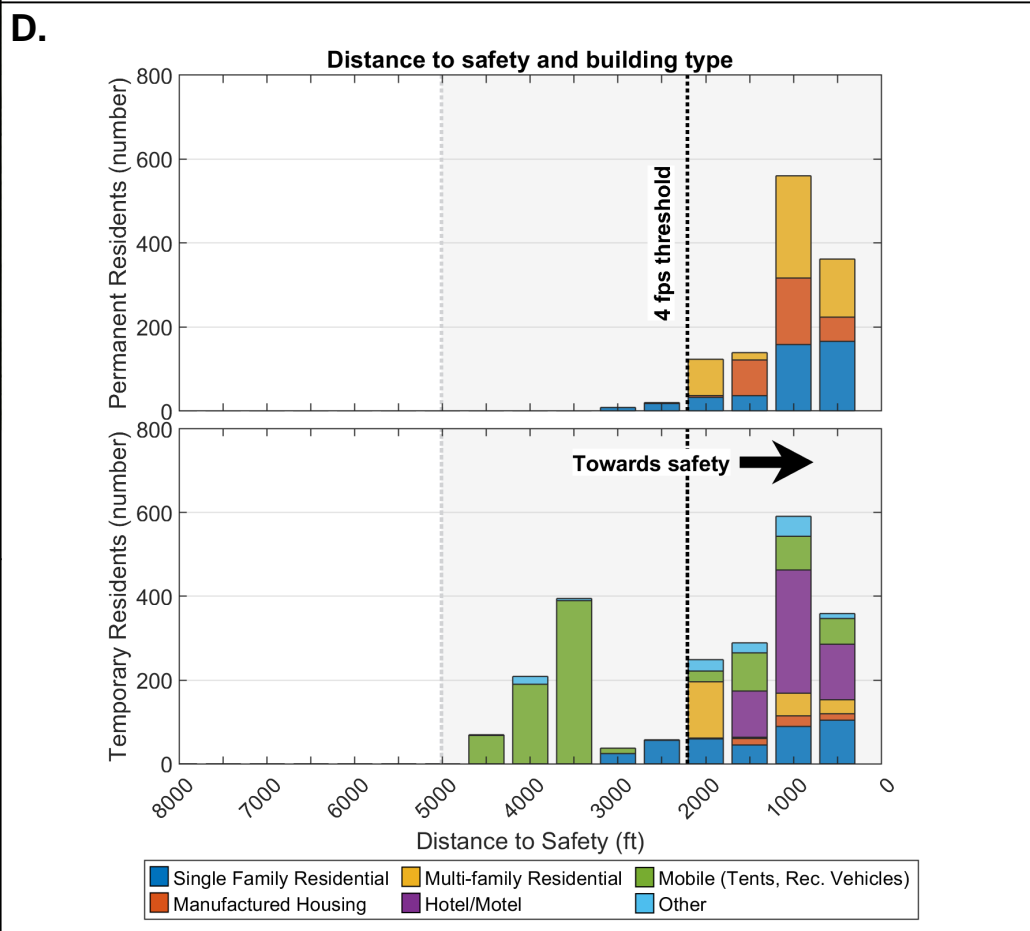
B.



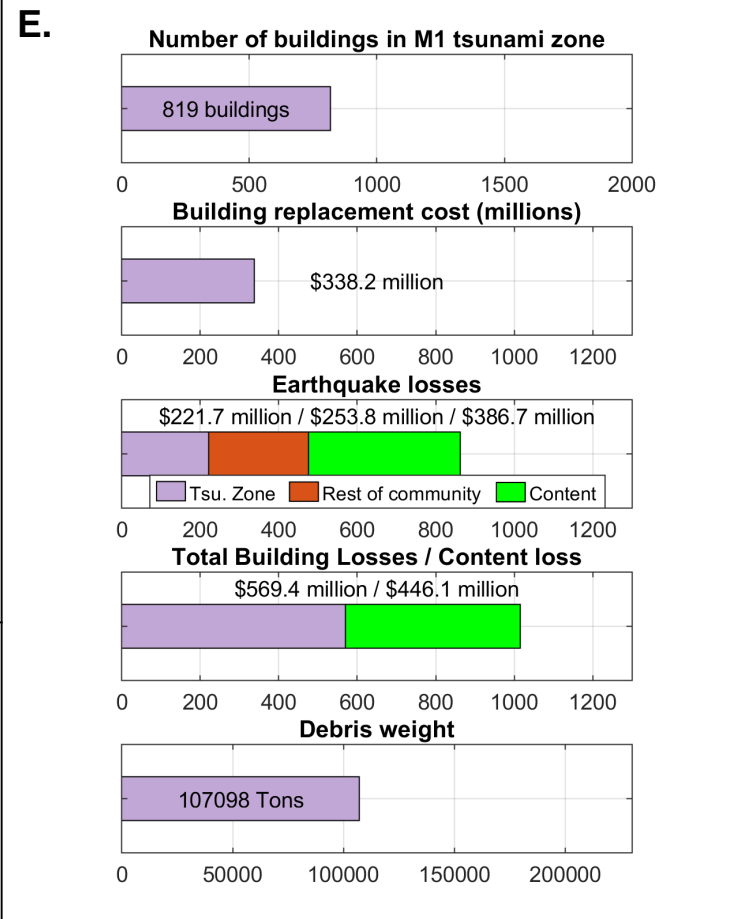
C.



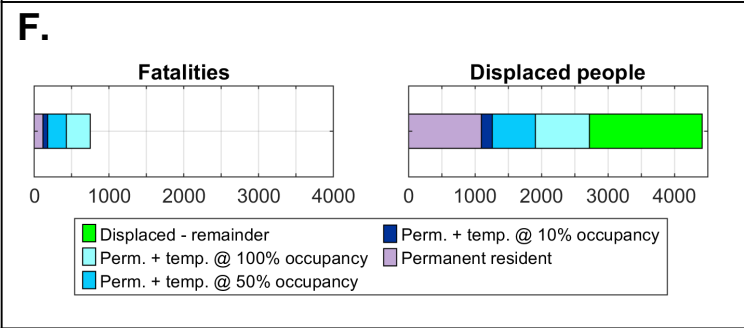
D.



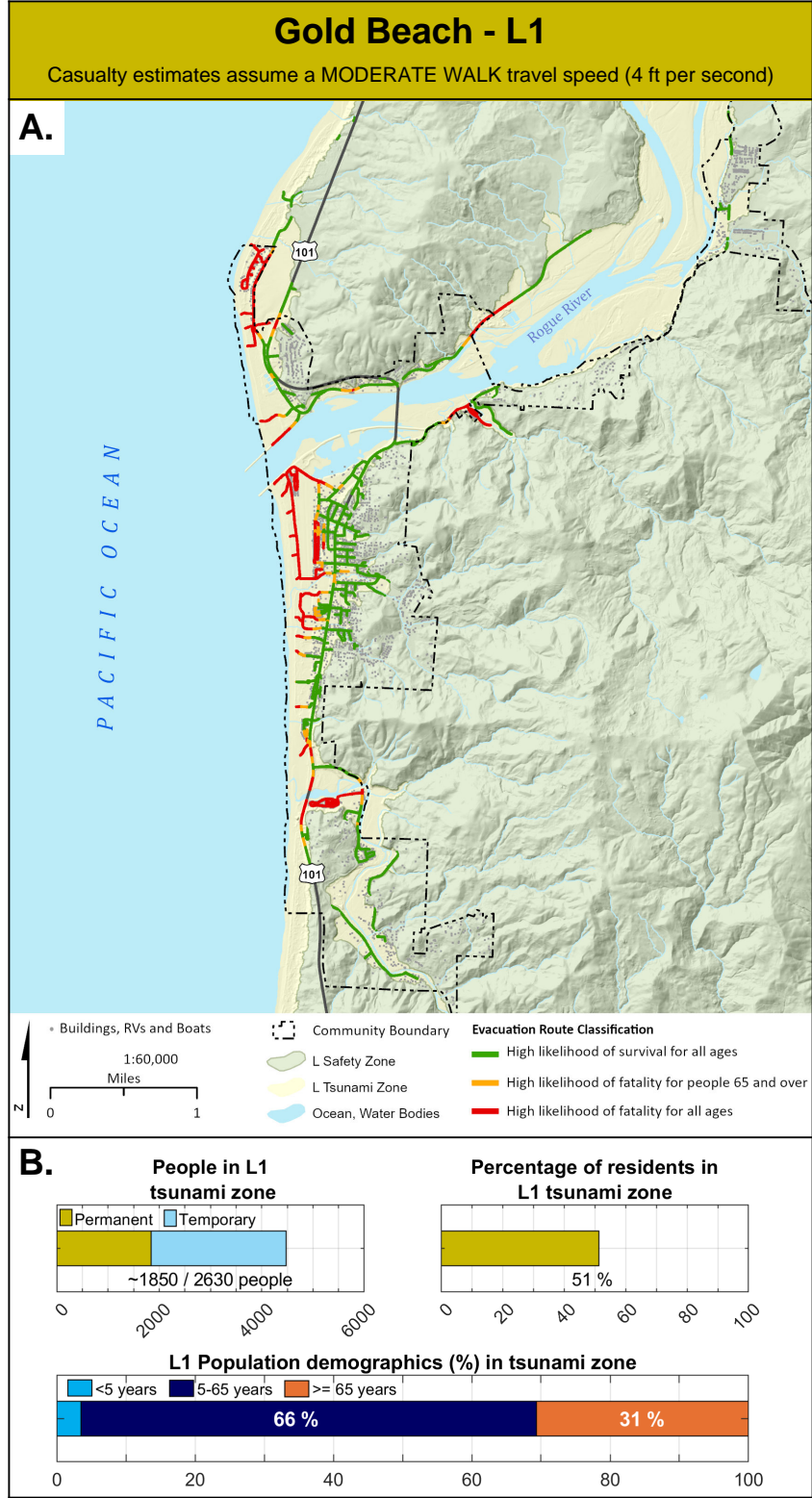
E.

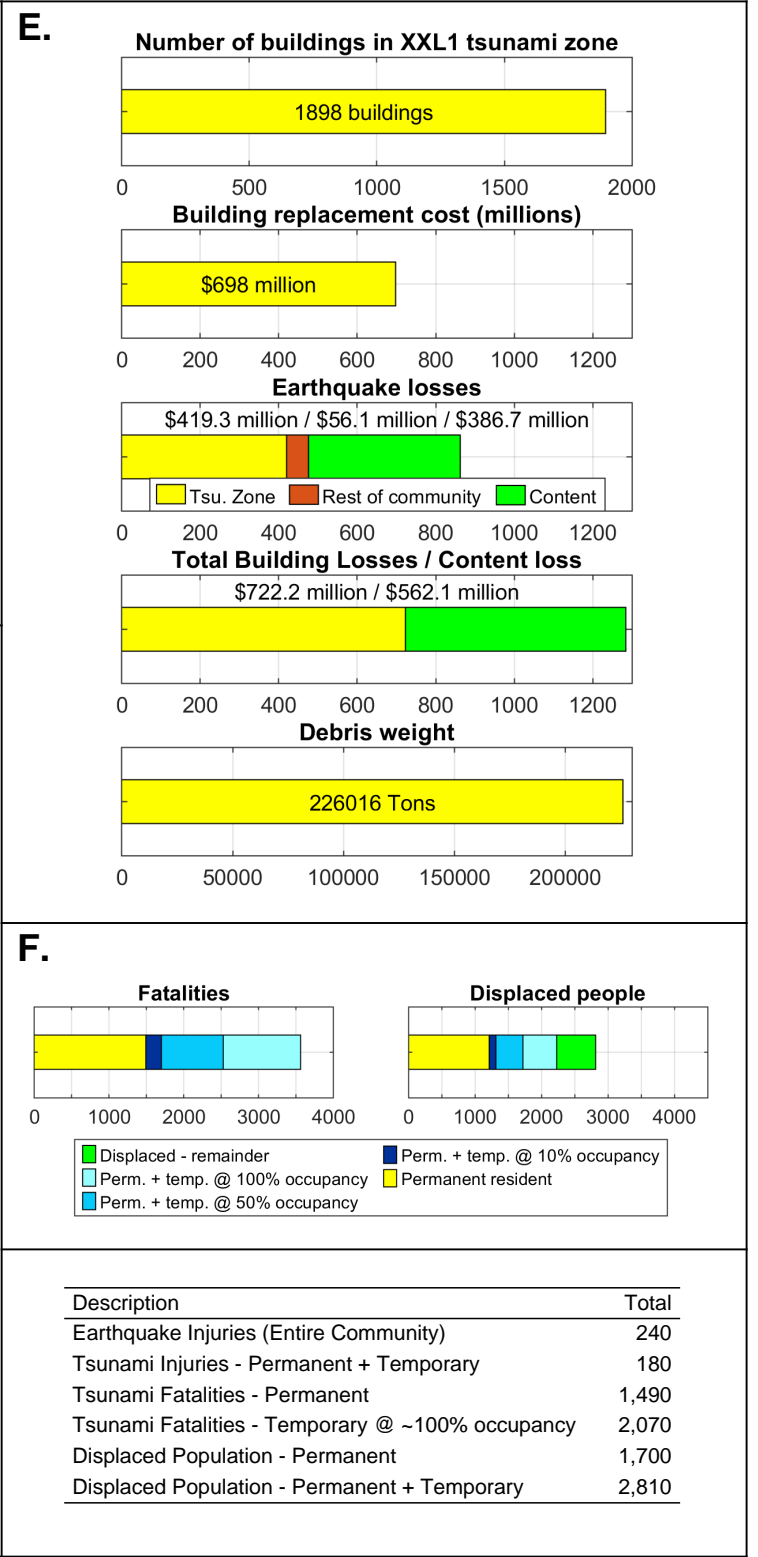
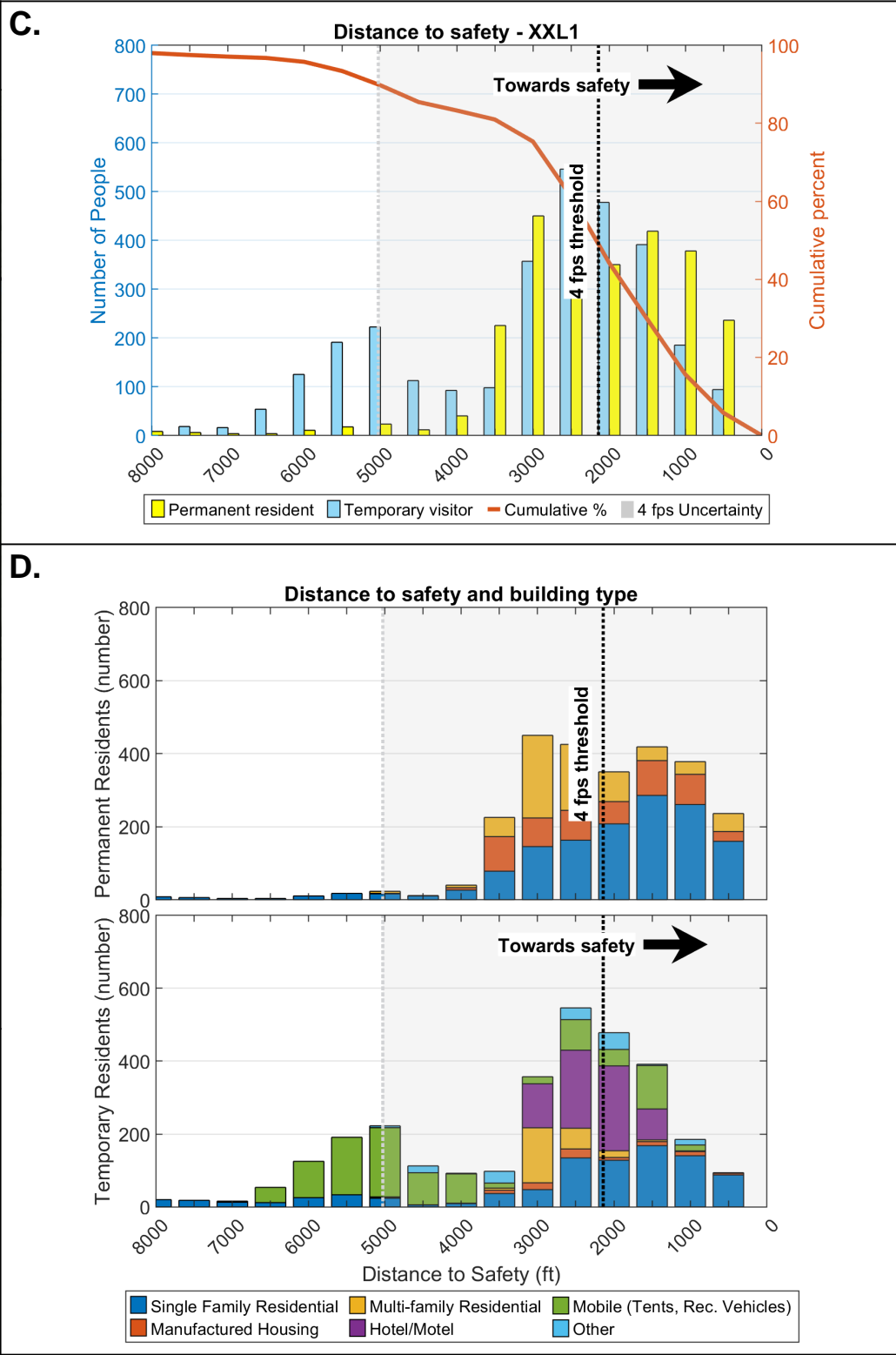
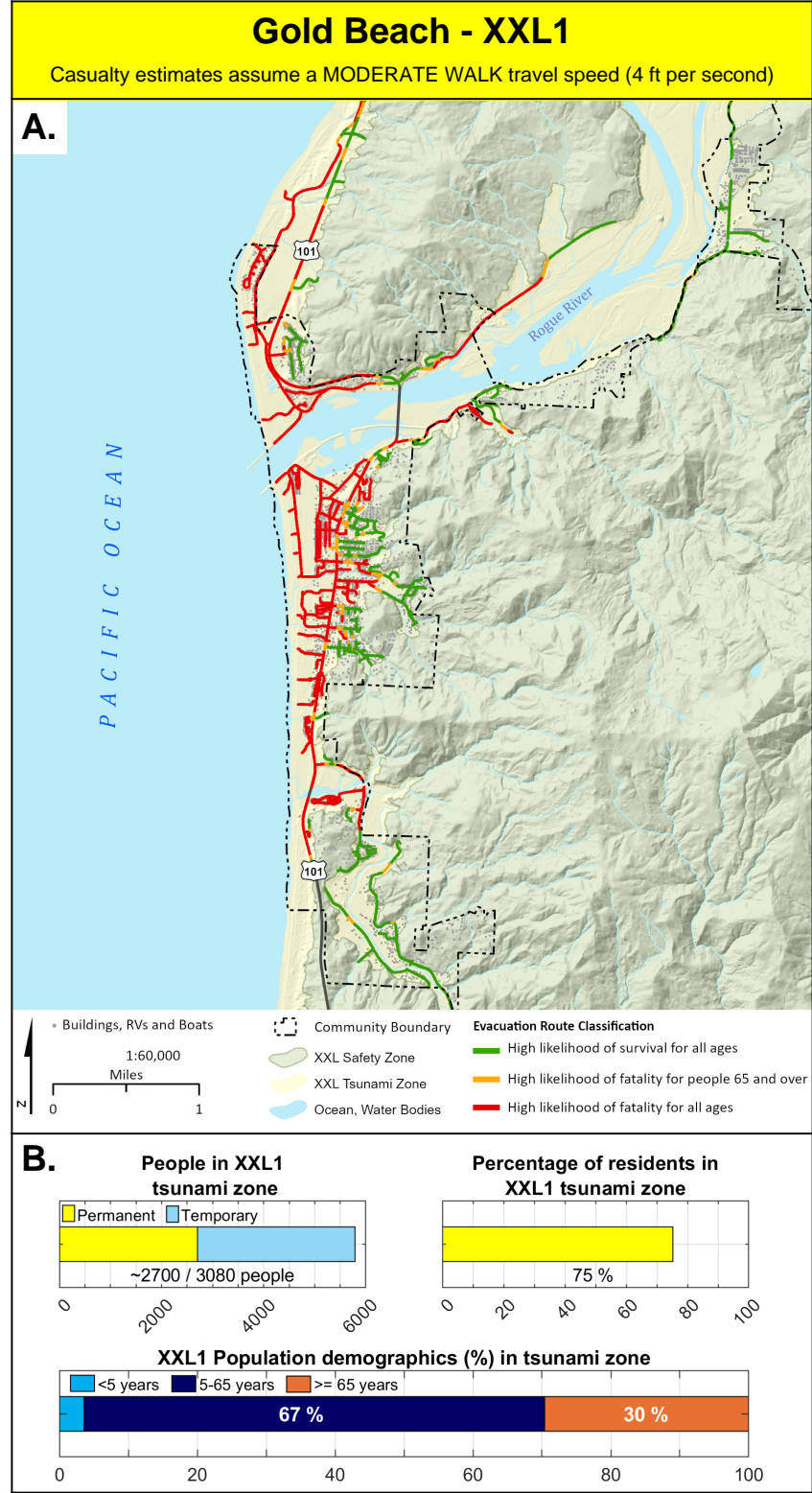


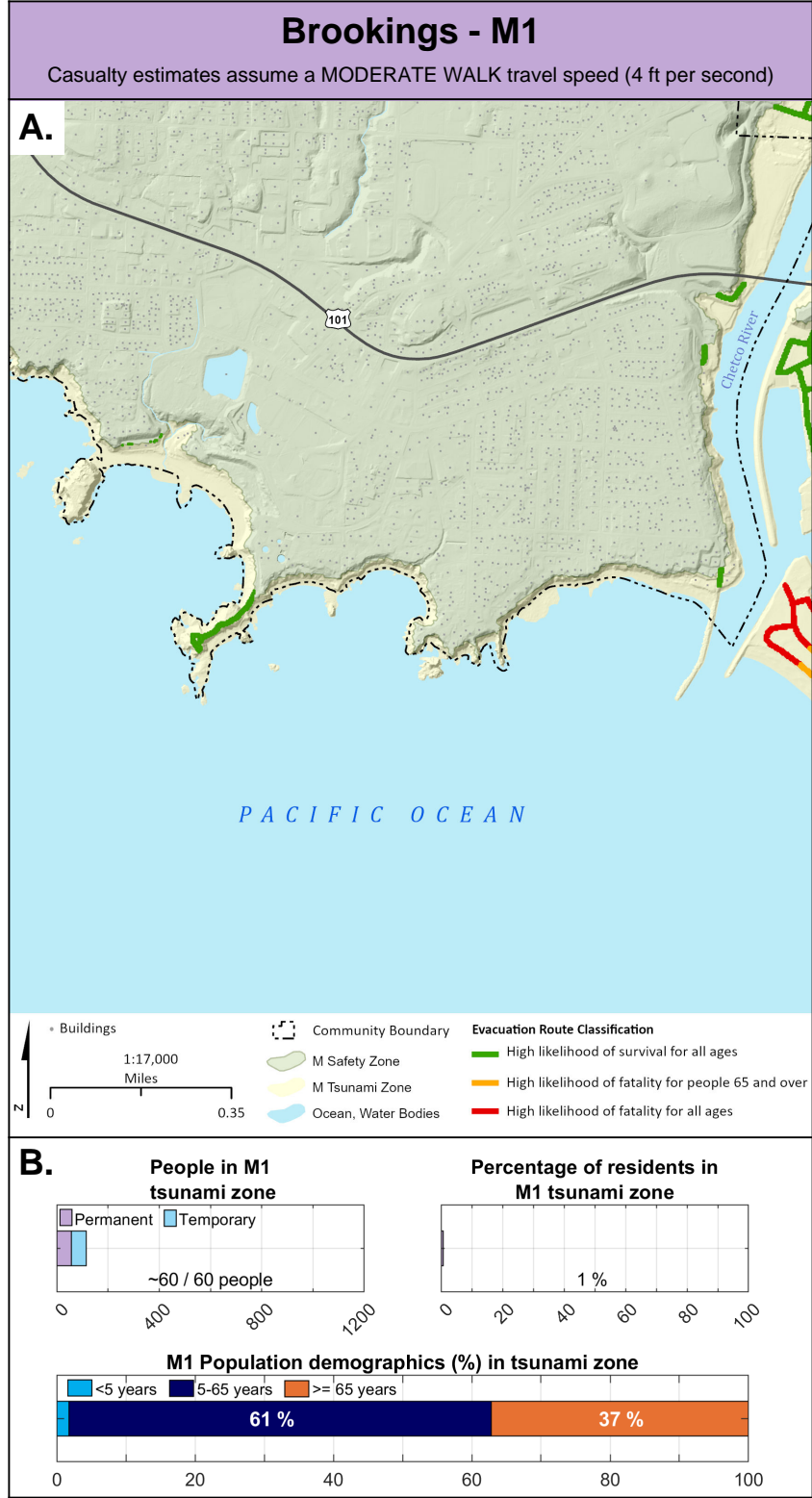
F.

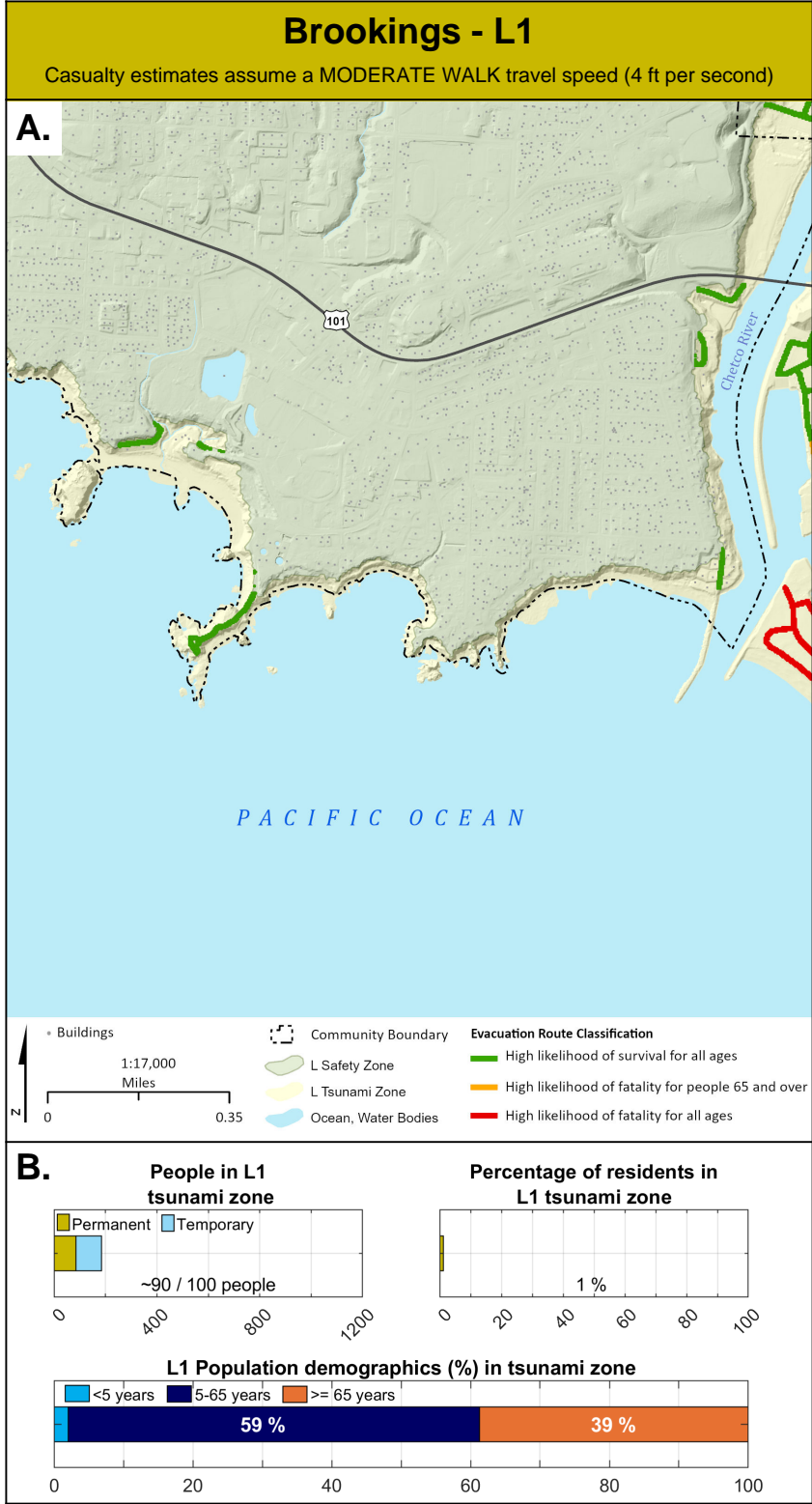


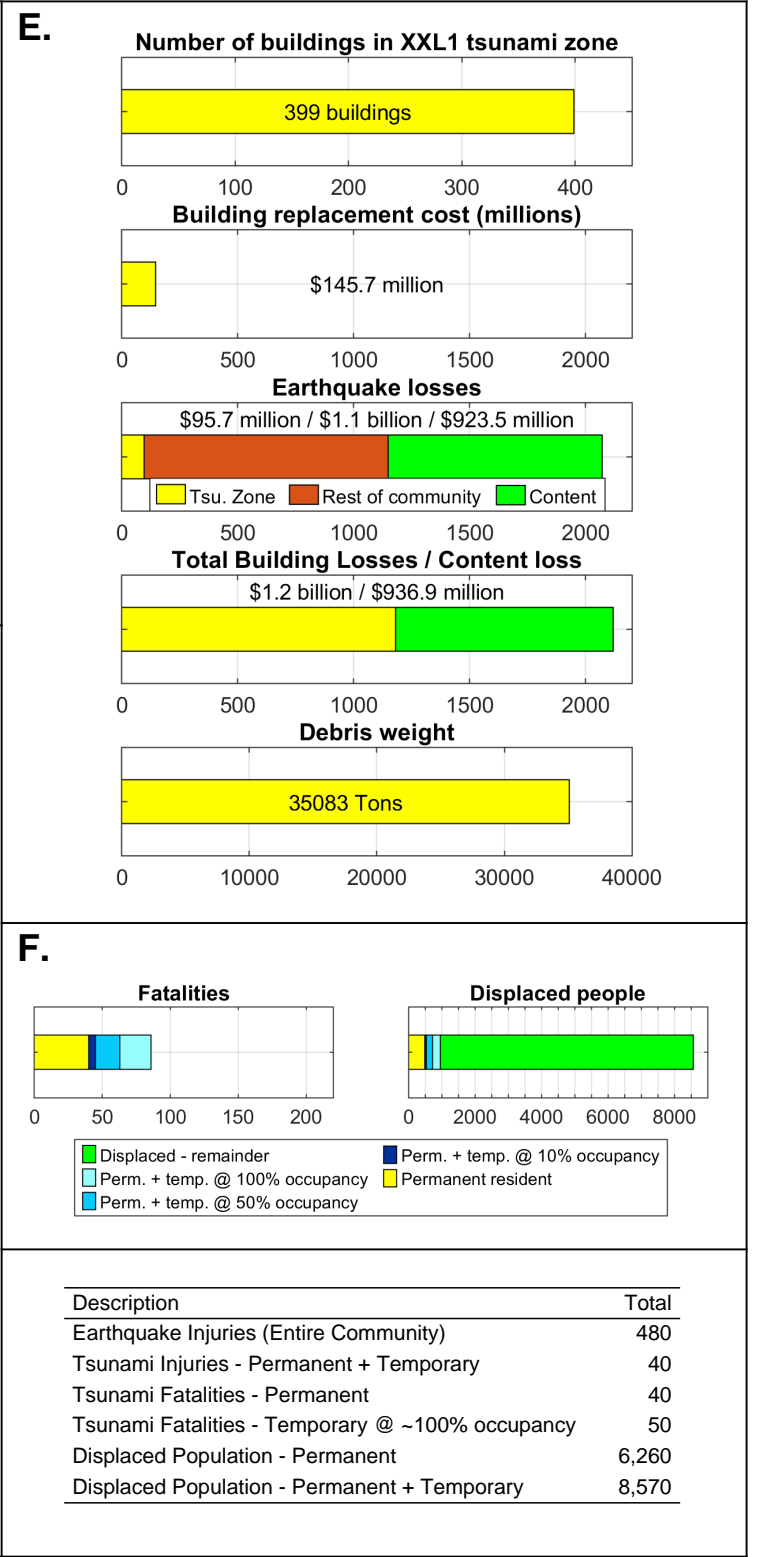
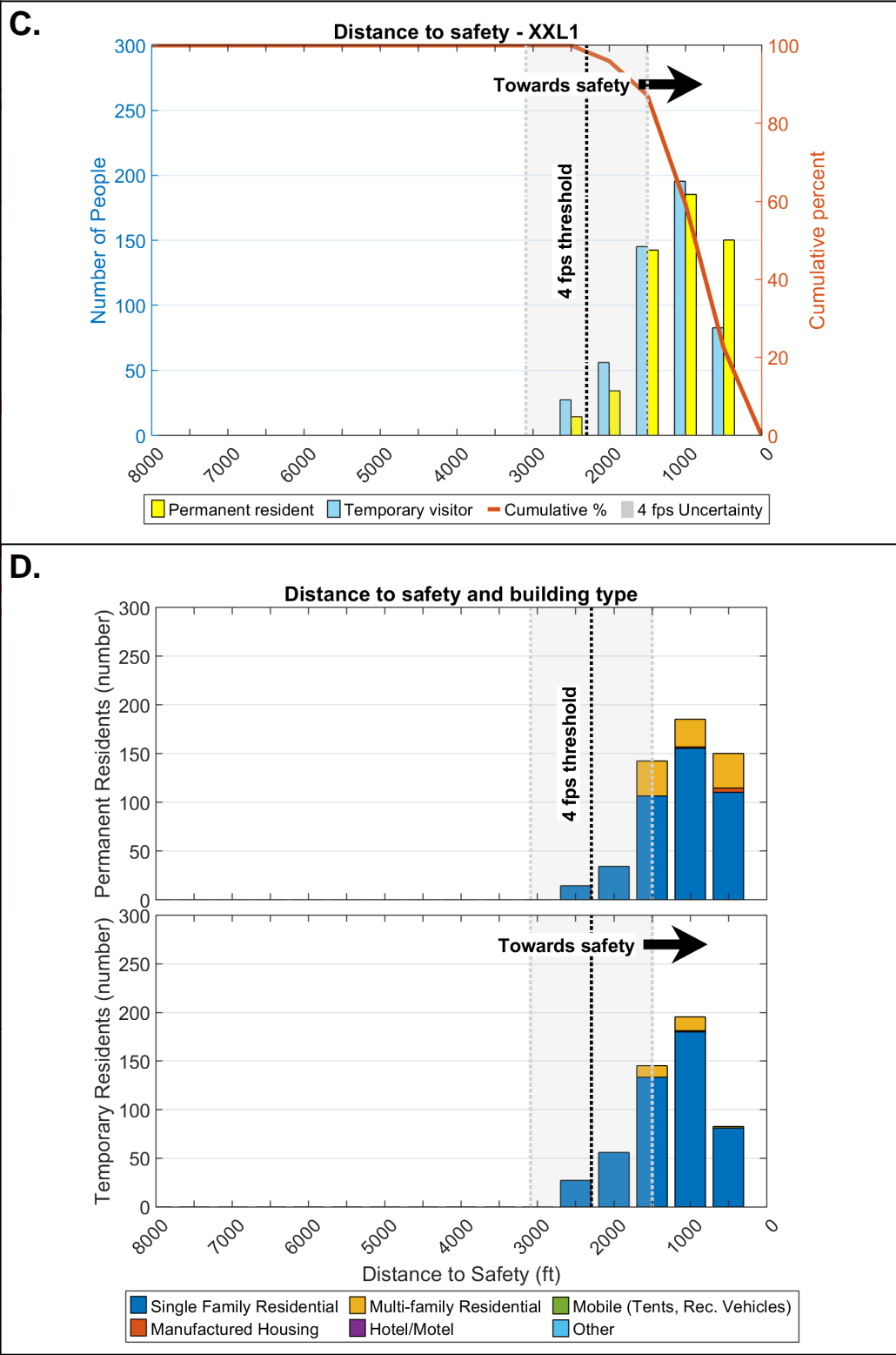
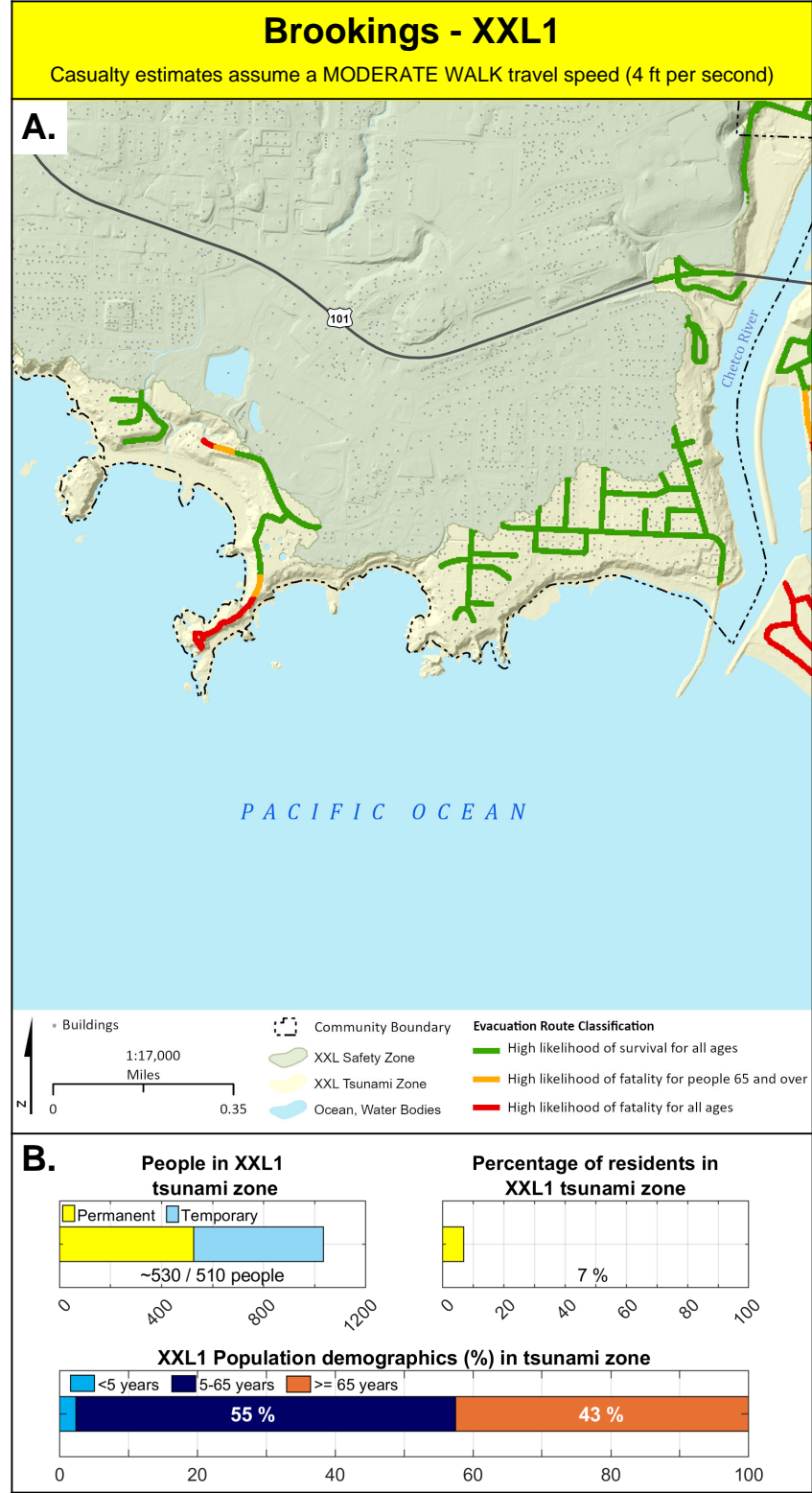
Description	Total
Earthquake Injuries (Entire Community)	240
Tsunami Injuries - Permanent + Temporary	200
Tsunami Fatalities - Permanent	110
Tsunami Fatalities - Temporary @ ~100% occupancy	630
Displaced Population - Permanent	2,370
Displaced Population - Permanent + Temporary	4,420

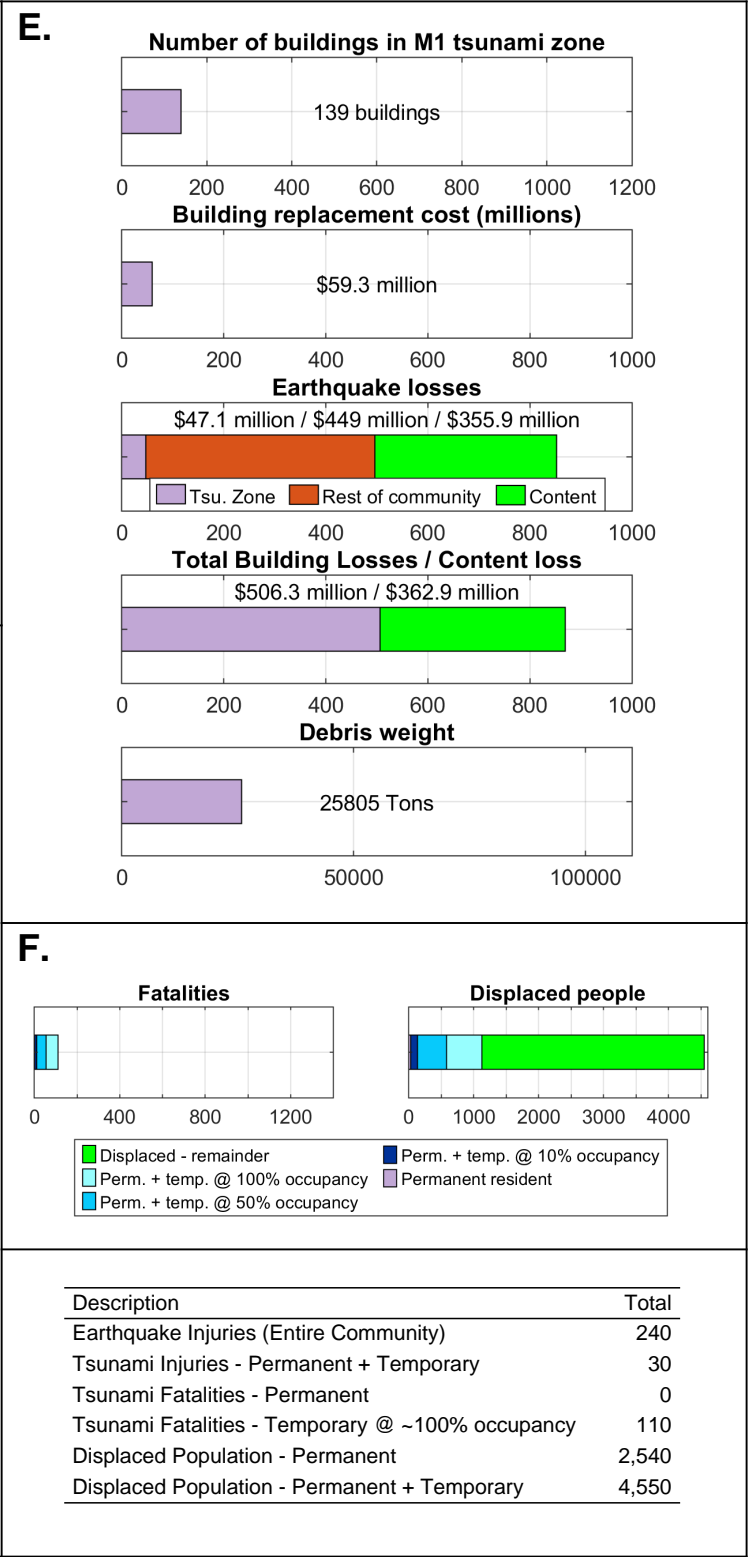
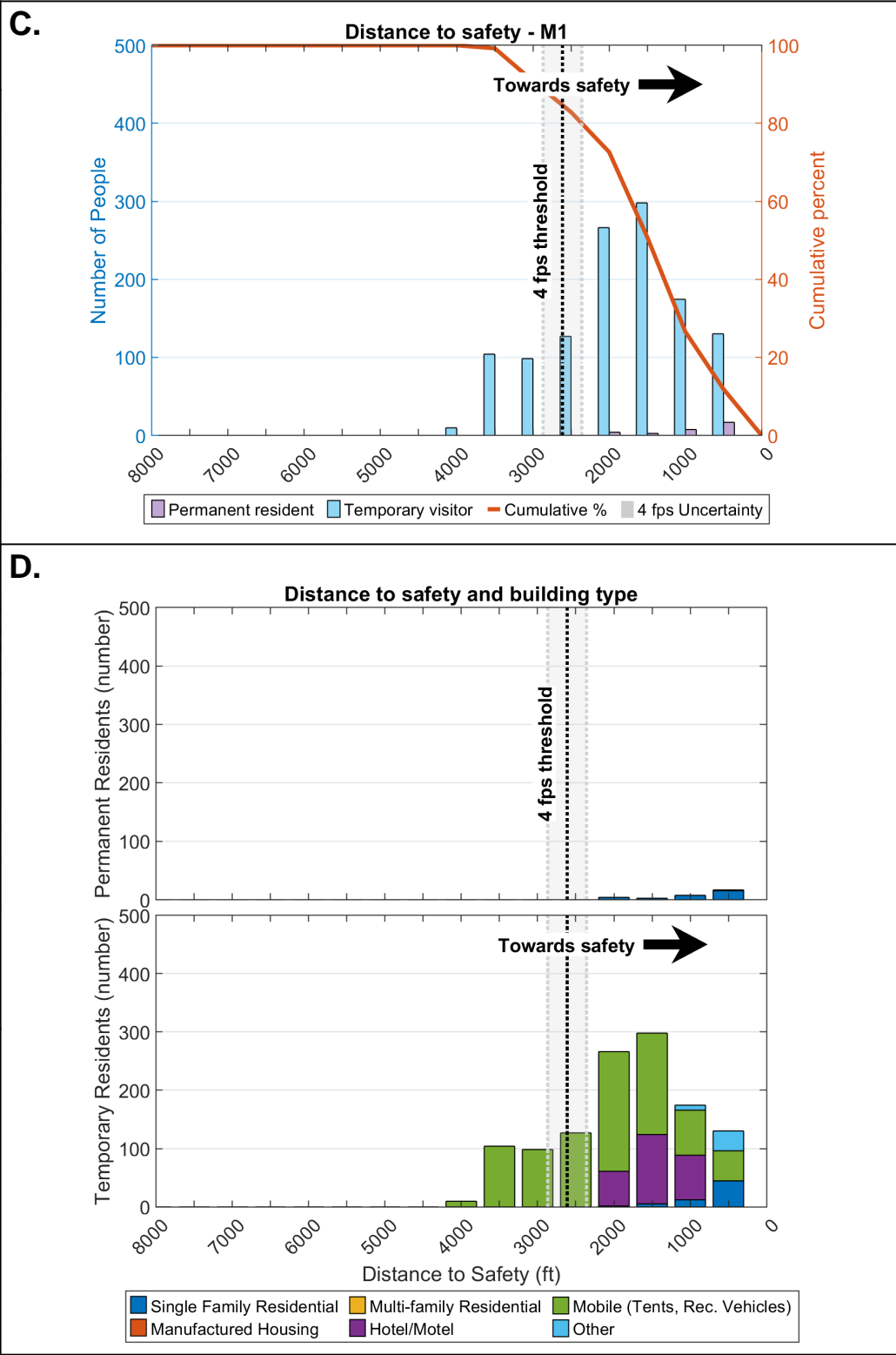
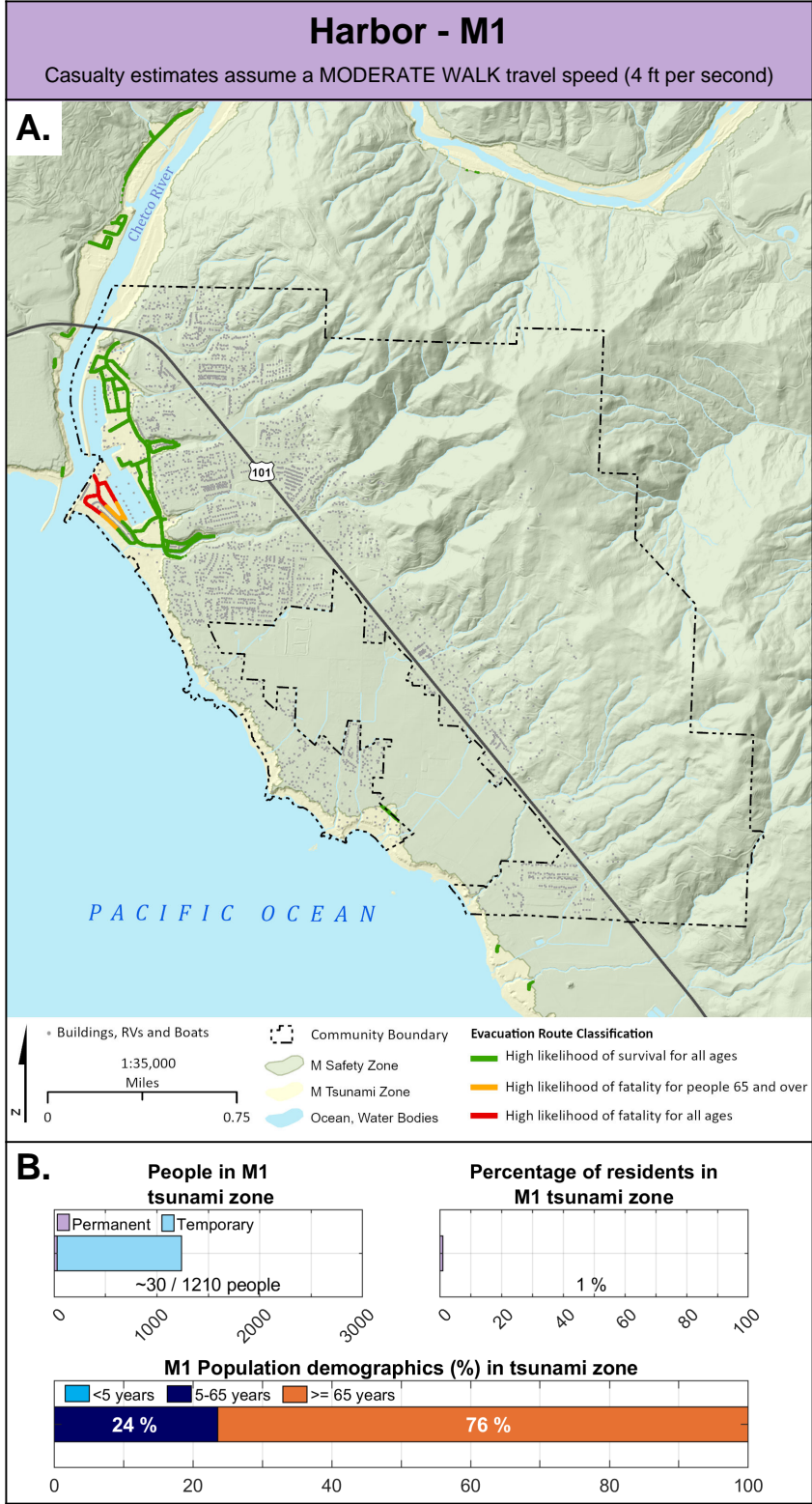








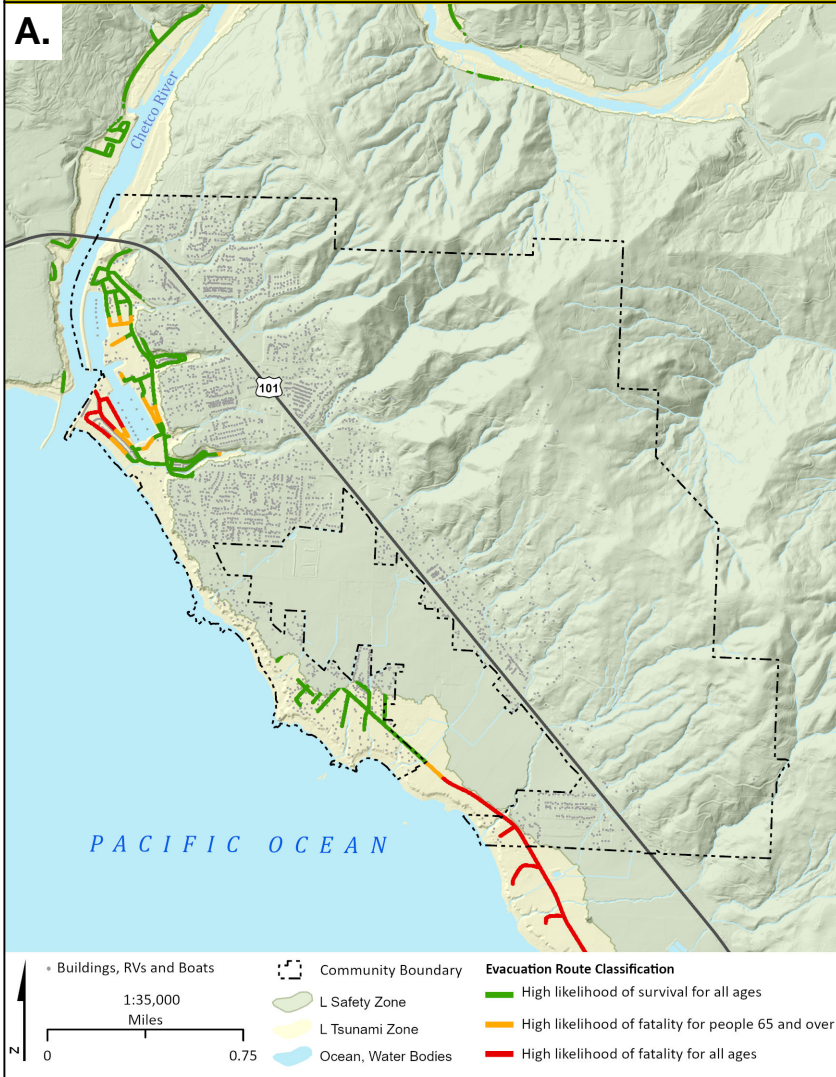




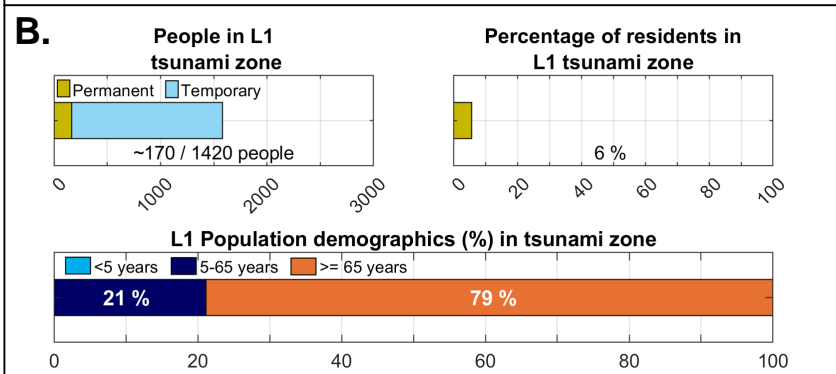
Harbor - L1

Casualty estimates assume a MODERATE WALK travel speed (4 ft per second)

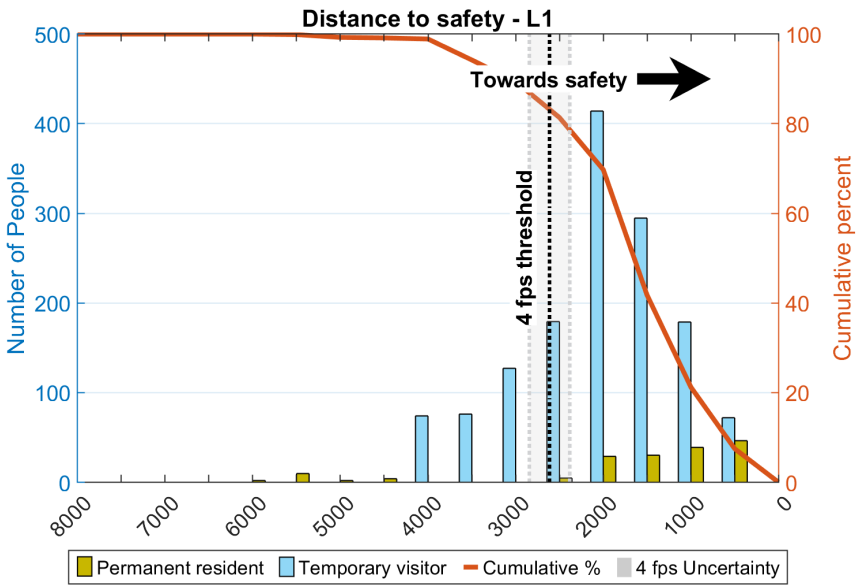
A.



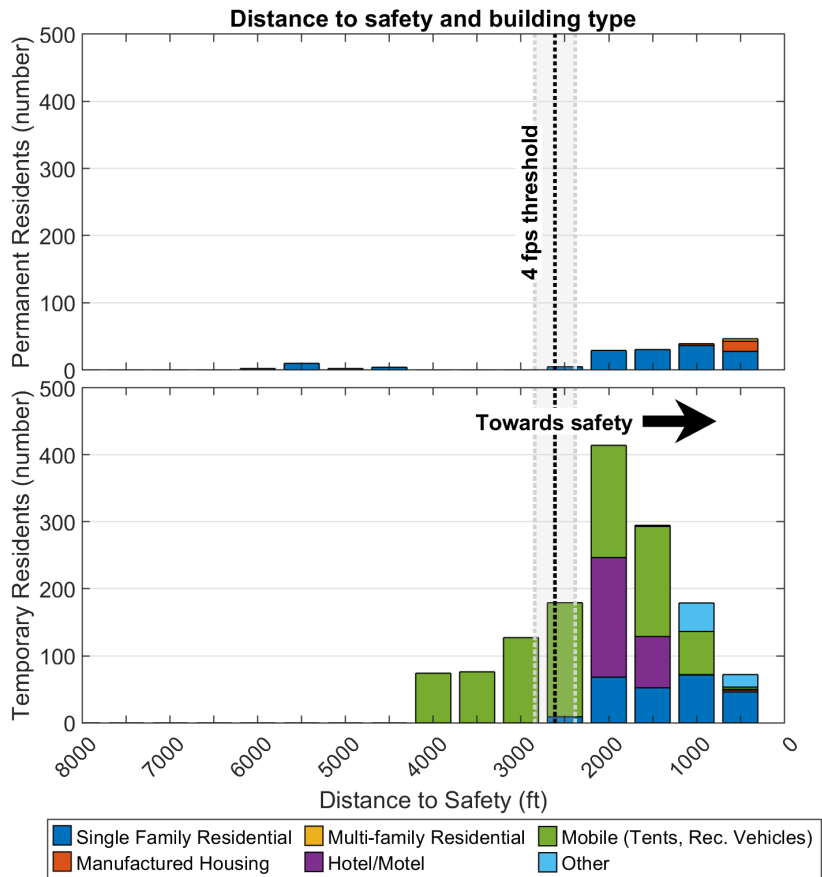
B.



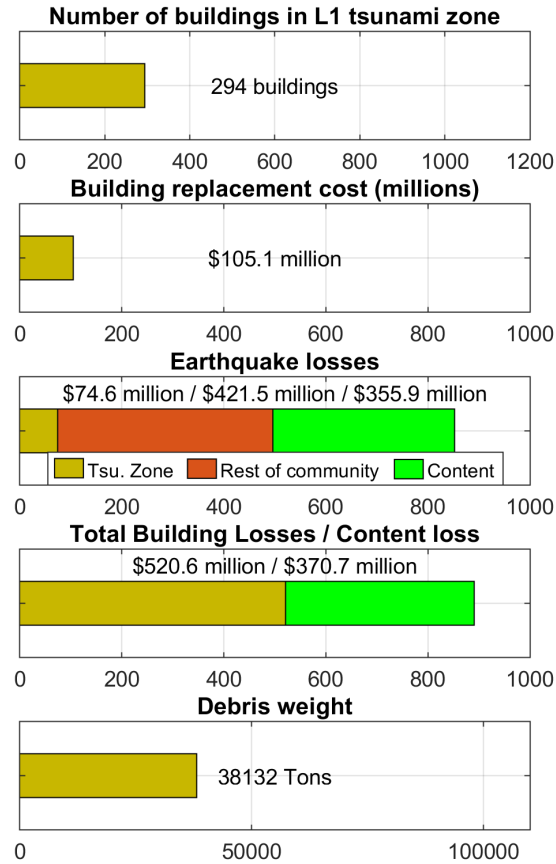
C.



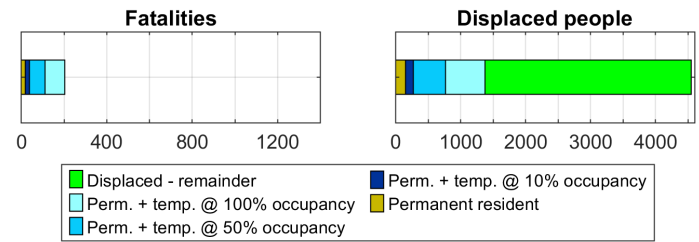
D.



E.



F.

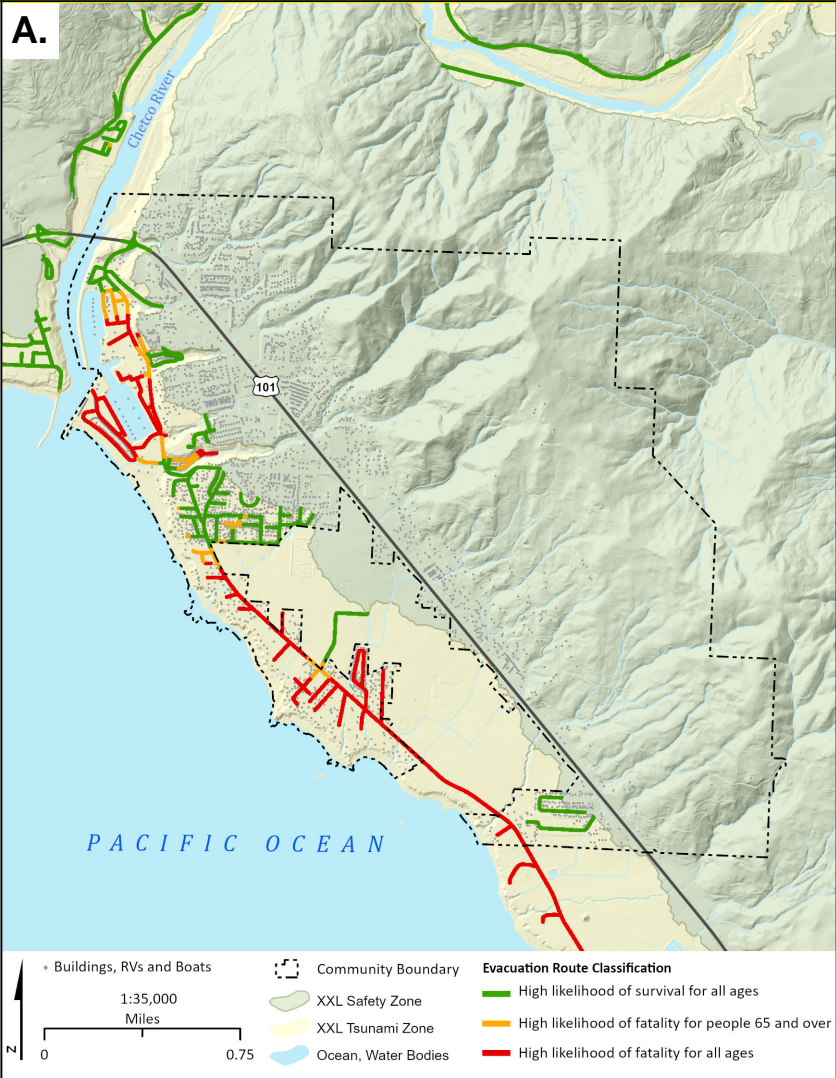


Description	Total
Earthquake Injuries (Entire Community)	240
Tsunami Injuries - Permanent + Temporary	60
Tsunami Fatalities - Permanent	20
Tsunami Fatalities - Temporary @ ~100% occupancy	190
Displaced Population - Permanent	2,560
Displaced Population - Permanent + Temporary	4,550

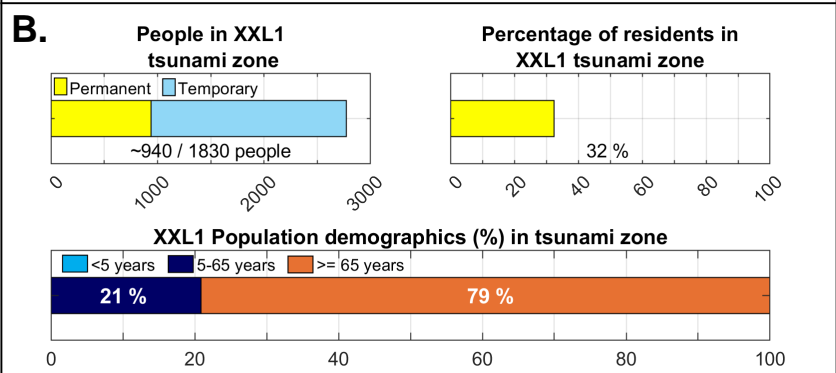
Harbor - XXL1

Casualty estimates assume a MODERATE WALK travel speed (4 ft per second)

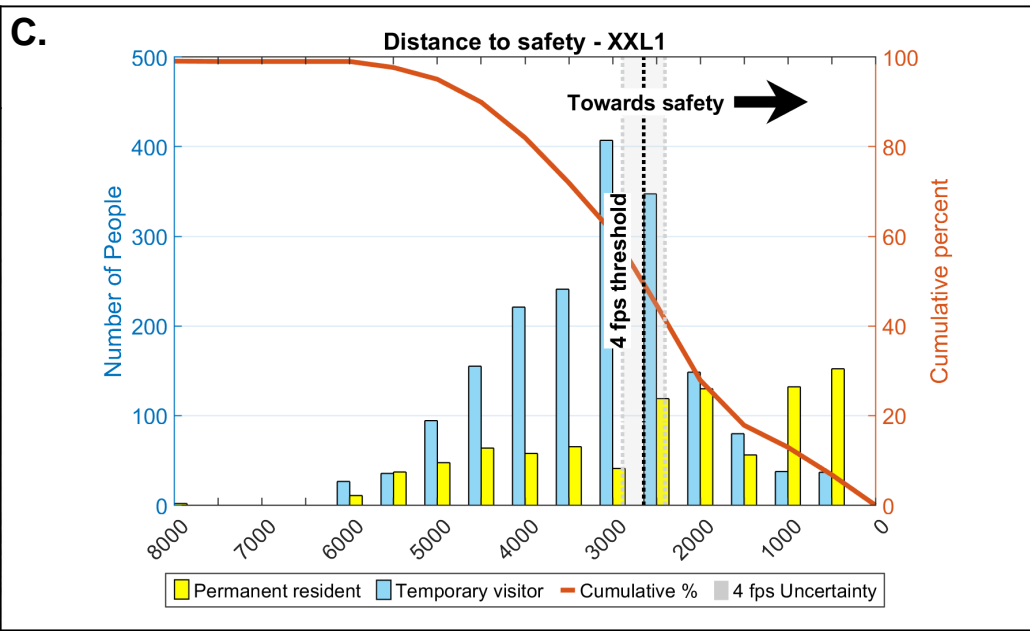
A.



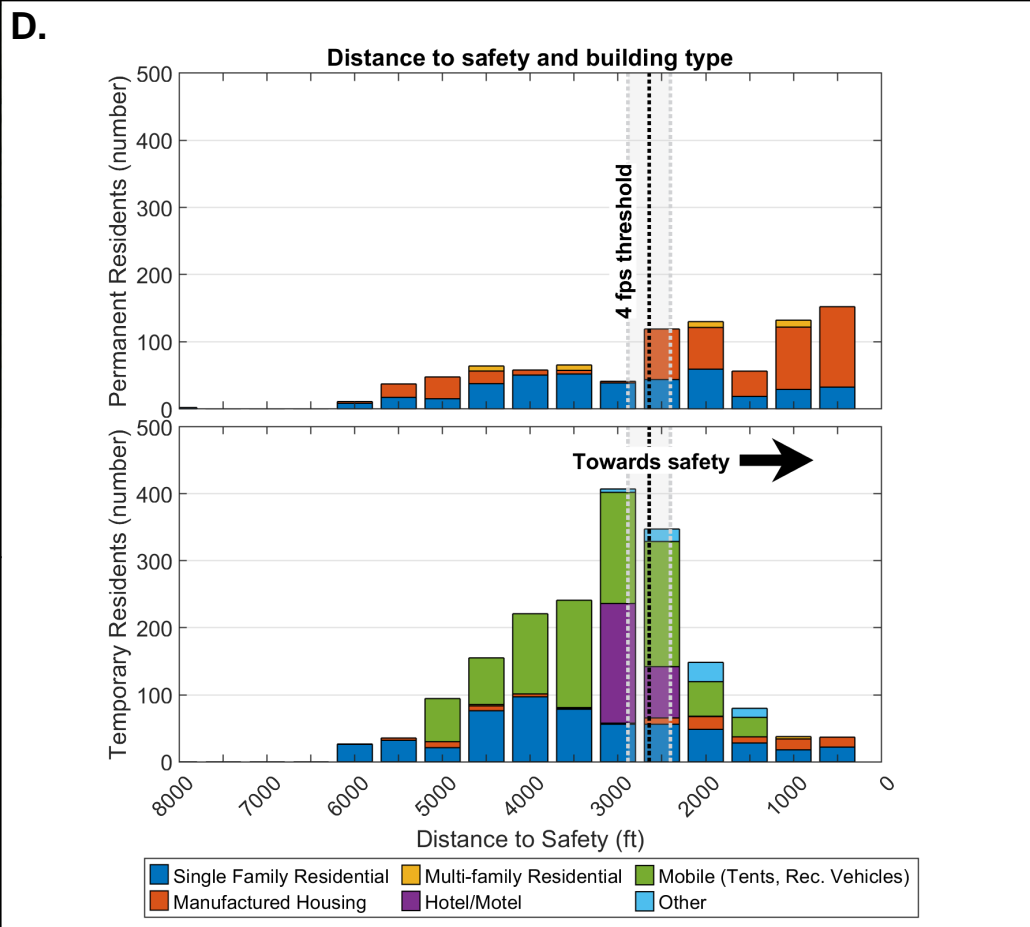
B.



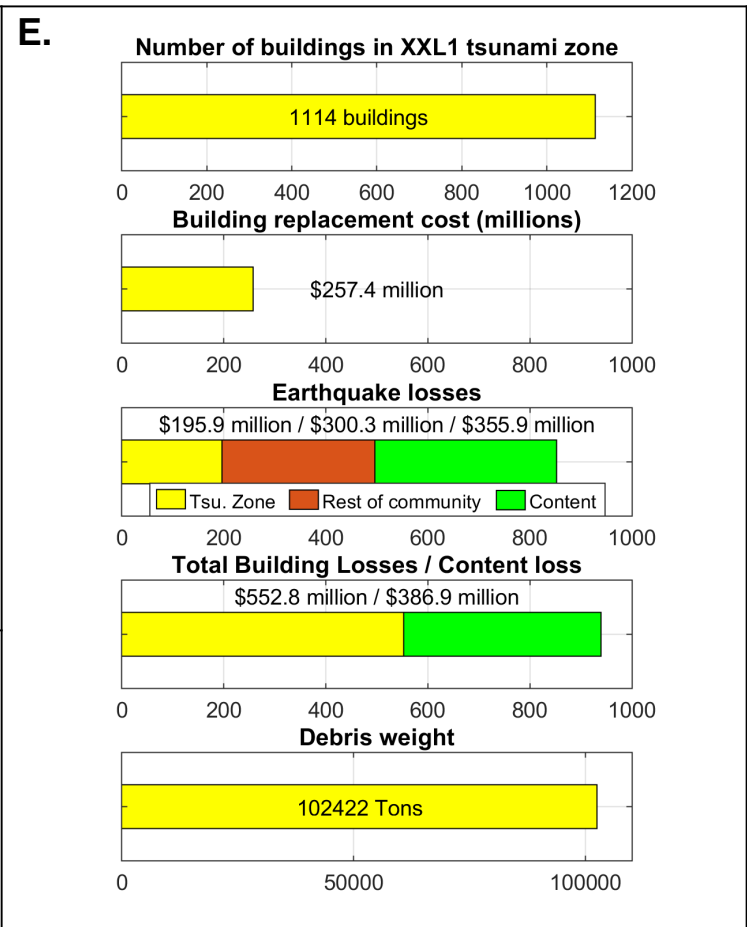
C.



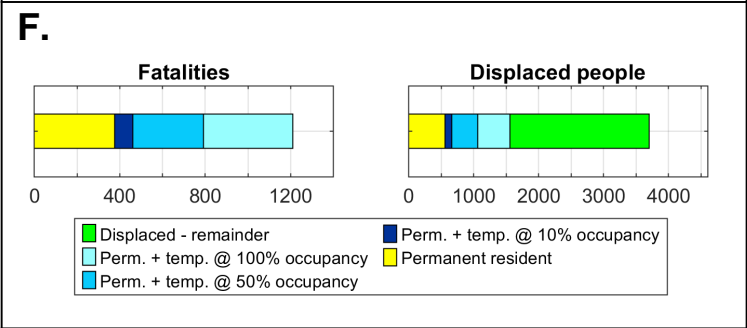
D.



E.



F.



Description	Total
Earthquake Injuries (Entire Community)	240
Tsunami Injuries - Permanent + Temporary	200
Tsunami Fatalities - Permanent	380
Tsunami Fatalities - Temporary @ ~100% occupancy	830
Displaced Population - Permanent	2,270
Displaced Population - Permanent + Temporary	3,700